

BELVEDERE CLUB 2019 ARCHITECTURAL INVENTORY



Site: 402 **Historic Name** N/A
Year Built c. 1890
Architectural Style Queen Anne

The north portion of this two-story cottage has a steeply pitched cross-gable roof with decorative carving in the gable ends, narrow clapboard siding at the first floor, and shingle siding at the second floor, all characteristic of the Queen Anne style. The wrap around front porch with hip roof supported by Doric columns, the first-floor windows with larger bottom sash and decorative upper sash, as well as the two over two windows in the second floor are also typical of the Queen Anne style.

Significant Features

- Two-story cross-gable massing in the north portion with decorative carving in the gable ends.
- Narrow clapboard siding at the first floor, shingle siding at the second floor.
- Wrap around front porch with Doric columns, hip roof and central stair.
- First floor windows with large lower sash and decorative upper sash, second floor one-over-one windows.

Condition

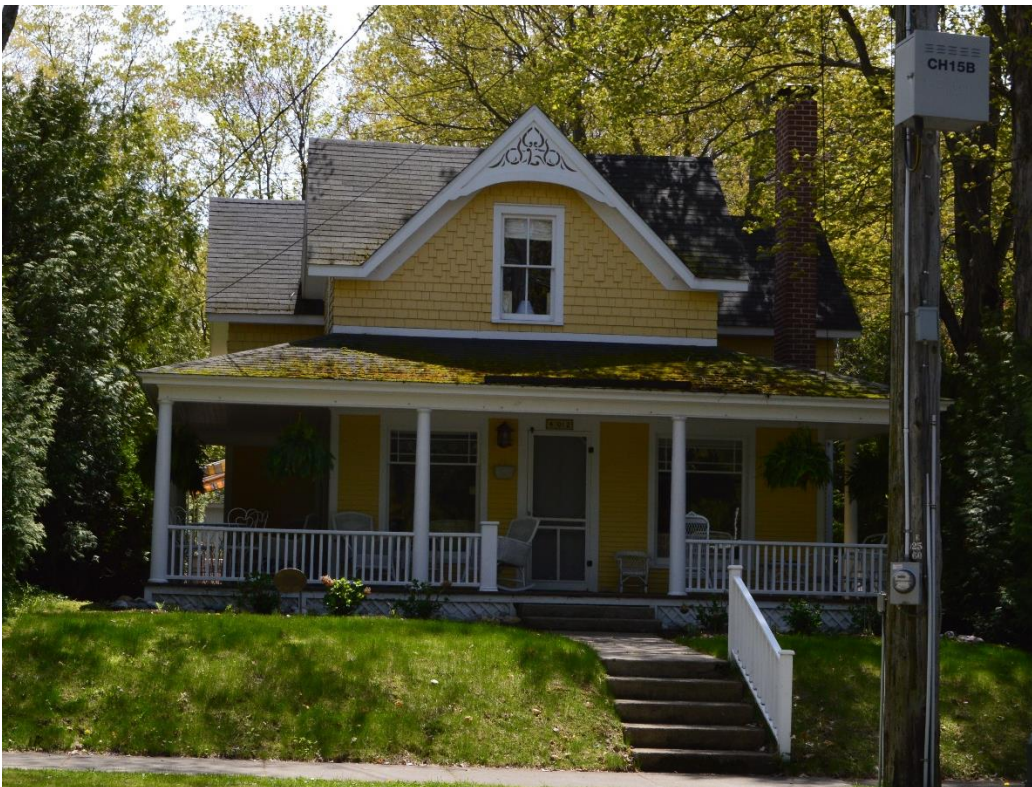
The cottage appears to be in good repair, the moss growing on roof surfaces could cause premature deterioration of the shingles.

ADDITIONAL PHOTOS

2007



2019 – North



South



South and east

