

BELVEDERE CLUB 2019 ARCHITECTURAL INVENTORY



Site: 210

Historic Name N/A

Year Built c. 1890

Architectural Style Colonial Revival

This one-and-a-half story cottage with a side gable roof with central gable front dormer, cornice returns on the dormer and in the gable ends, and full width front porch with Doric columns and simple railing is characteristic of the Colonial Revival style. Although now clad in vinyl siding and aluminum trim the cottage retains its original form and window locations.

Significant Features

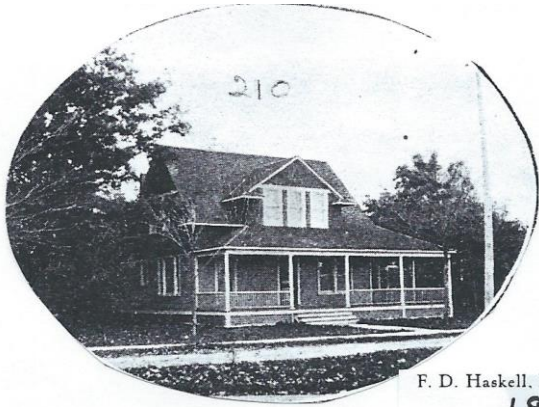
- Side gable roof with cornice returns in the gable ends. Central front gable dormer with cornice returns and three equally spaced window openings.
- Central entrance and symmetrical window openings.
- Full width hip roof front porch with Doric columns, central stair and wood railing.
- Large central window flanked by smaller matching windows on south elevation, and paired windows in center of gable ends.

Condition

The cottage appears to be in good repair with no apparent issues.

ADDITIONAL PHOTOS

1907



F. D. Haskell, Kalamazoo, Mich.
1907

2019 – East and north



West



West and south

