

BELVEDERE CLUB 2019 ARCHITECTURAL INVENTORY



Site: 206

Historic Name The Bixby

Year Built c. 1890

Architectural Style Queen Anne with Stick Style elements

The cross-gable roof massing with clipped gables of this two story cottage are more typical of Queen Anne, but the vertical siding in the gable end, and decorative railings on the full width front porch have Stick Style characteristics. As the two styles slightly overlapped in the years they were popular it is not uncommon for a cottage to have elements from both styles. The front portion of this cottage appears to retain all of its original features that appear in the 1923 photograph.

Significant Features

- Cross gable massing with clipped gable roof and vertical siding in the gable ends.
- Full width front porch with turned posts, "ladder" railing, and cross shaped brackets at the tops of the posts.
- Windows with multiple panes in the upper sash.

Condition

The cottage appears to be in good repair with no apparent issues. It retains many of its original features.

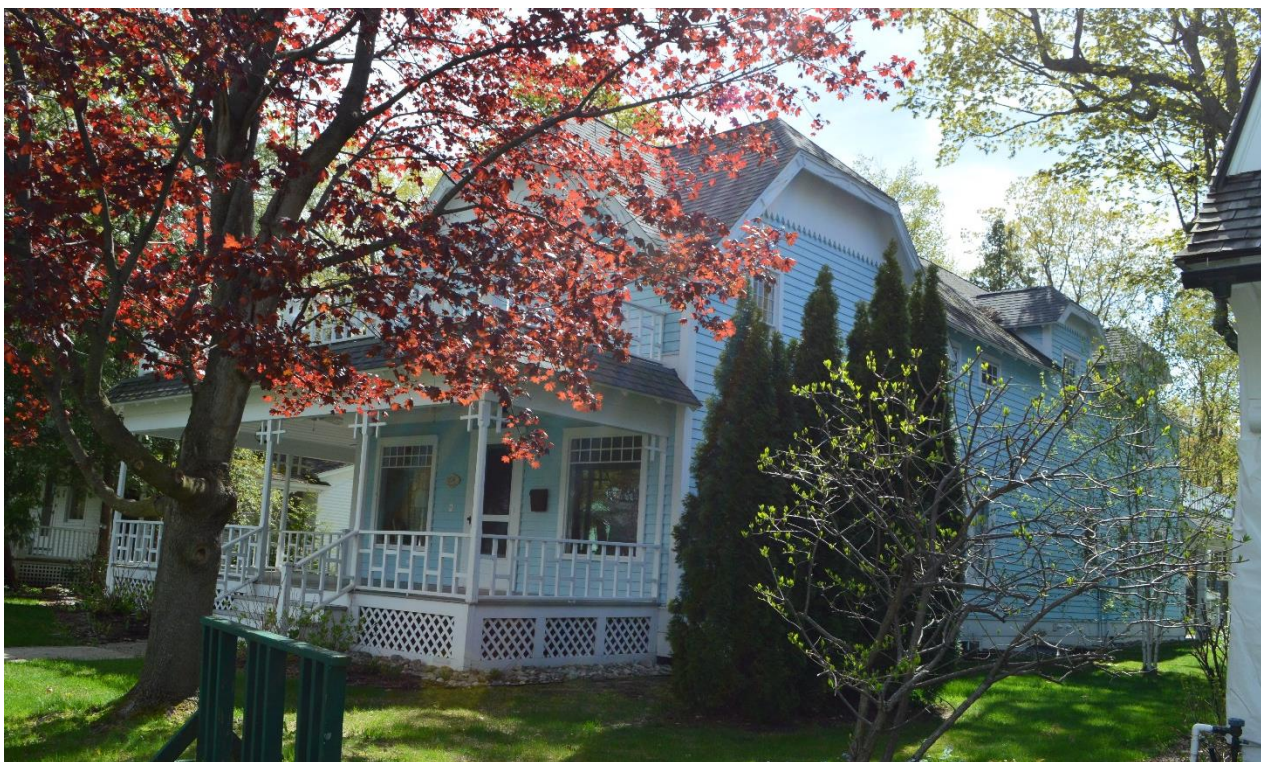
ADDITIONAL PHOTOS

1894 and 1923



1923

2019 – North and east



South and west



North and west

