

BELVEDERE CLUB 2019 ARCHITECTURAL INVENTORY



Site: 33

Historic Name N/A

Year Built c. 1900

Architectural Style Shingle Style

The roof line of this two-story cottage was altered from a steep curved gable to more like a gambrel roof near the top. It appears the Palladian type window in the gable ends was added at that time. The curve at the bottom which creates the front porch roof was retained, an important characteristic of the Shingle style. The windows with the diamond panes in the upper sash and two panes in the lower sash on the north side appear to be original, as does the porch that extends to the north.

Significant Features

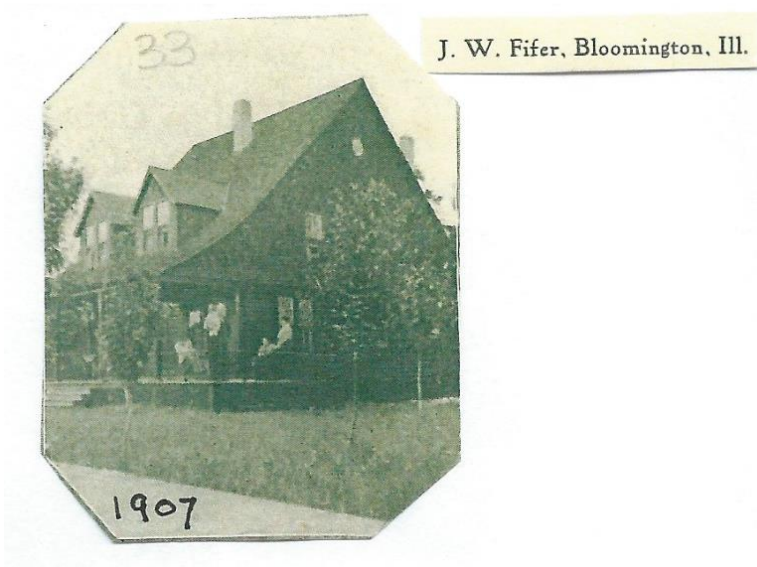
- Narrow clapboard siding at first floor with shingle siding on upper floor.
- Gable roof with curve at the bottom creating the front porch roof.
- Full width front porch with carved brackets at the posts and the north extension and railing.
- Diamond pane windows, including the windows with diamond pane in the upper sash and two panes in the lower sash.
- Palladian window in gable ends.
- Gable front dormers.

Condition

The cottage is in good repair no issues are apparent.

ADDITIONAL PHOTOS

1907



2019 – East and south



West and north



West and south

