

WATER FACILITIES: Direct pressure & gravity system, water from well 18' deep, 24" diameter...

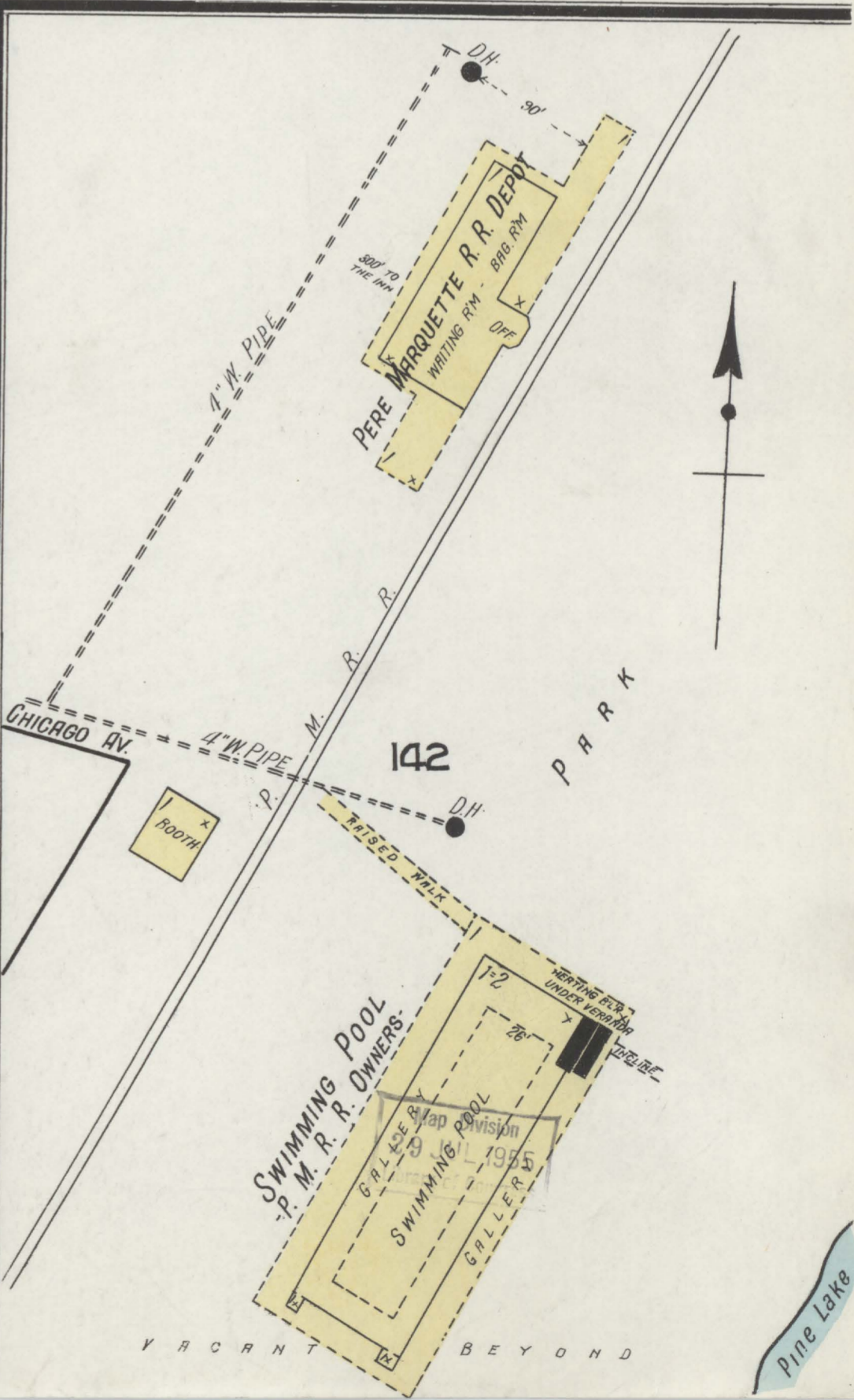
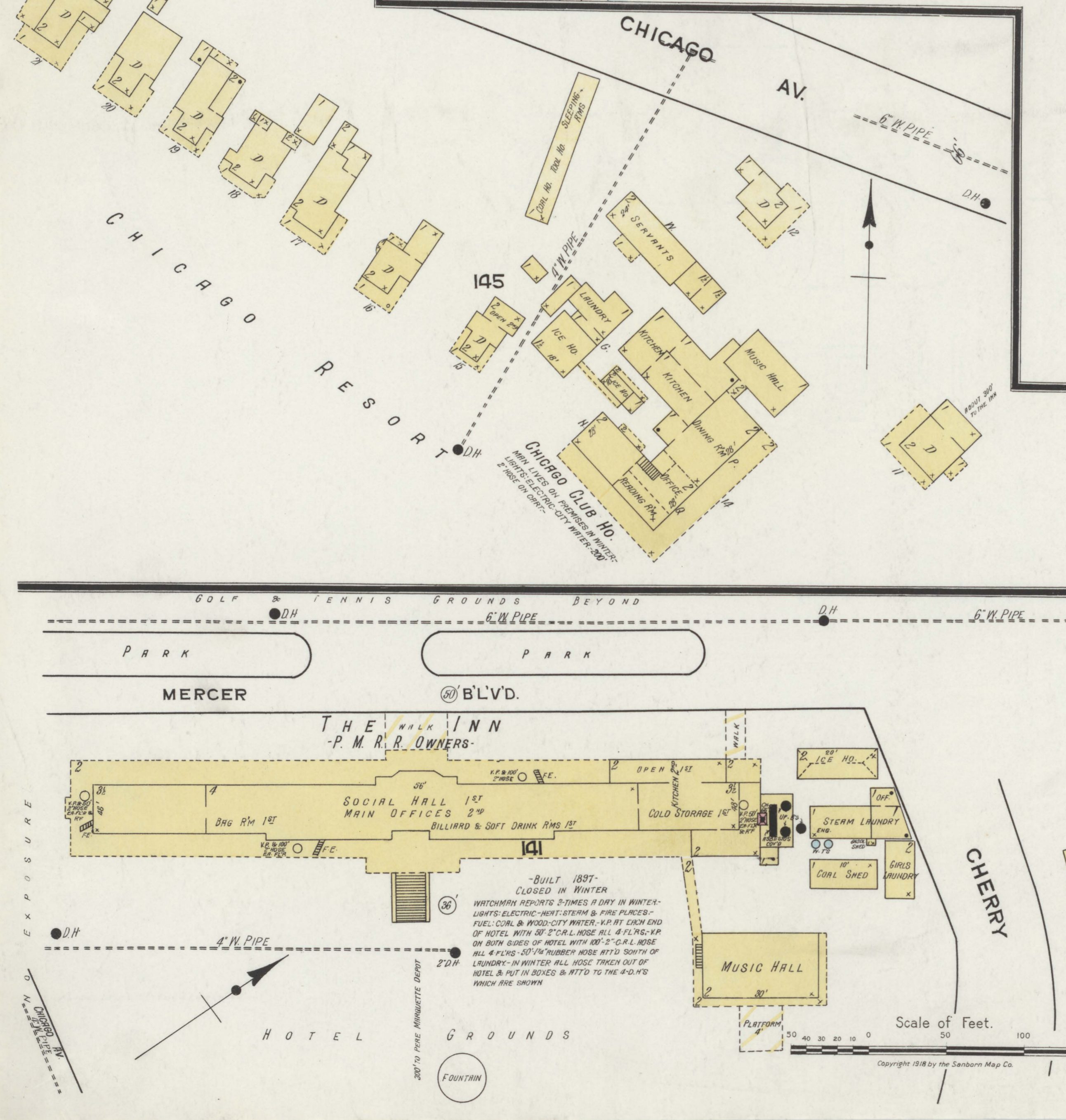
FIRE DEPT: 22 men, volunteers, 3 hose carts, 2000' hose, 1-chemical engine...

KEY: FIRE WALL, GIN, ASB, ROOF METAL CORNICE, FIRE WALL, 12" IN. ASB, ROOF WOOD CORNICE...

Map Division FEB 25 1918 Library of Congress

INDEX

Table with columns for STREET, SHEET, and SHERMAN. Lists streets from Ainslie to Rose and corresponding sheet numbers.



Scale of Feet. Copyright 1918 by the Sanborn Map Co.

Round

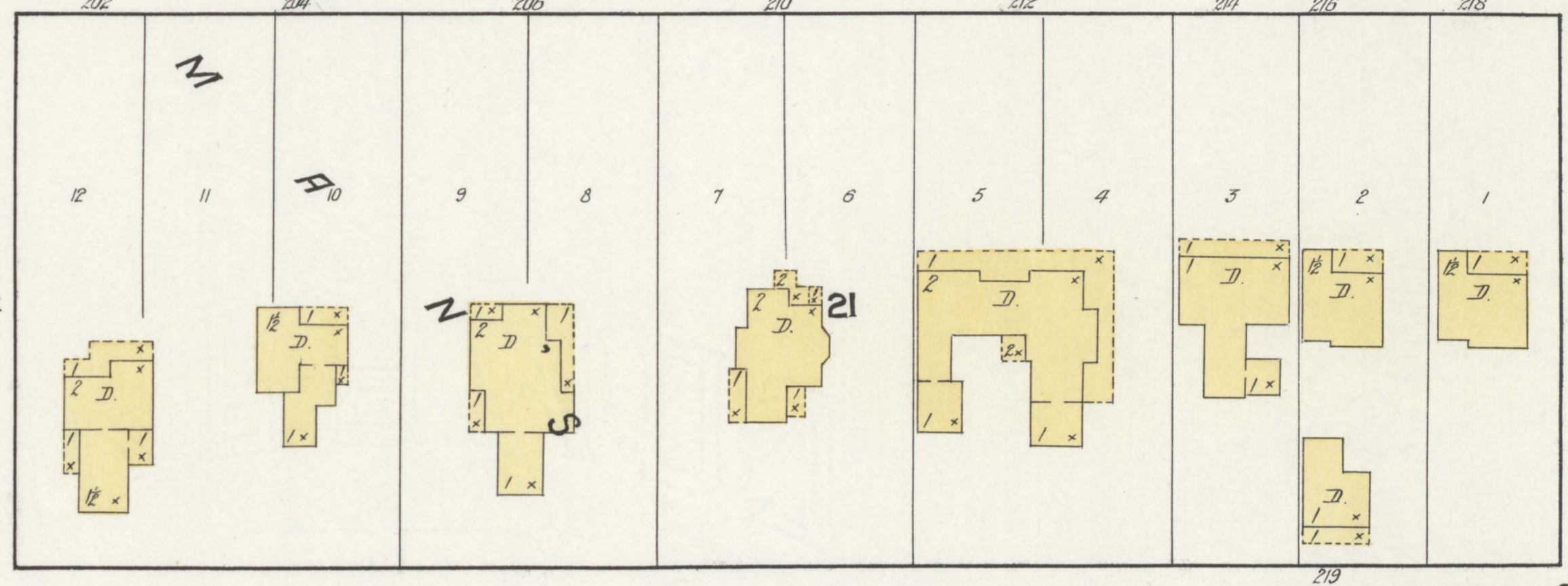
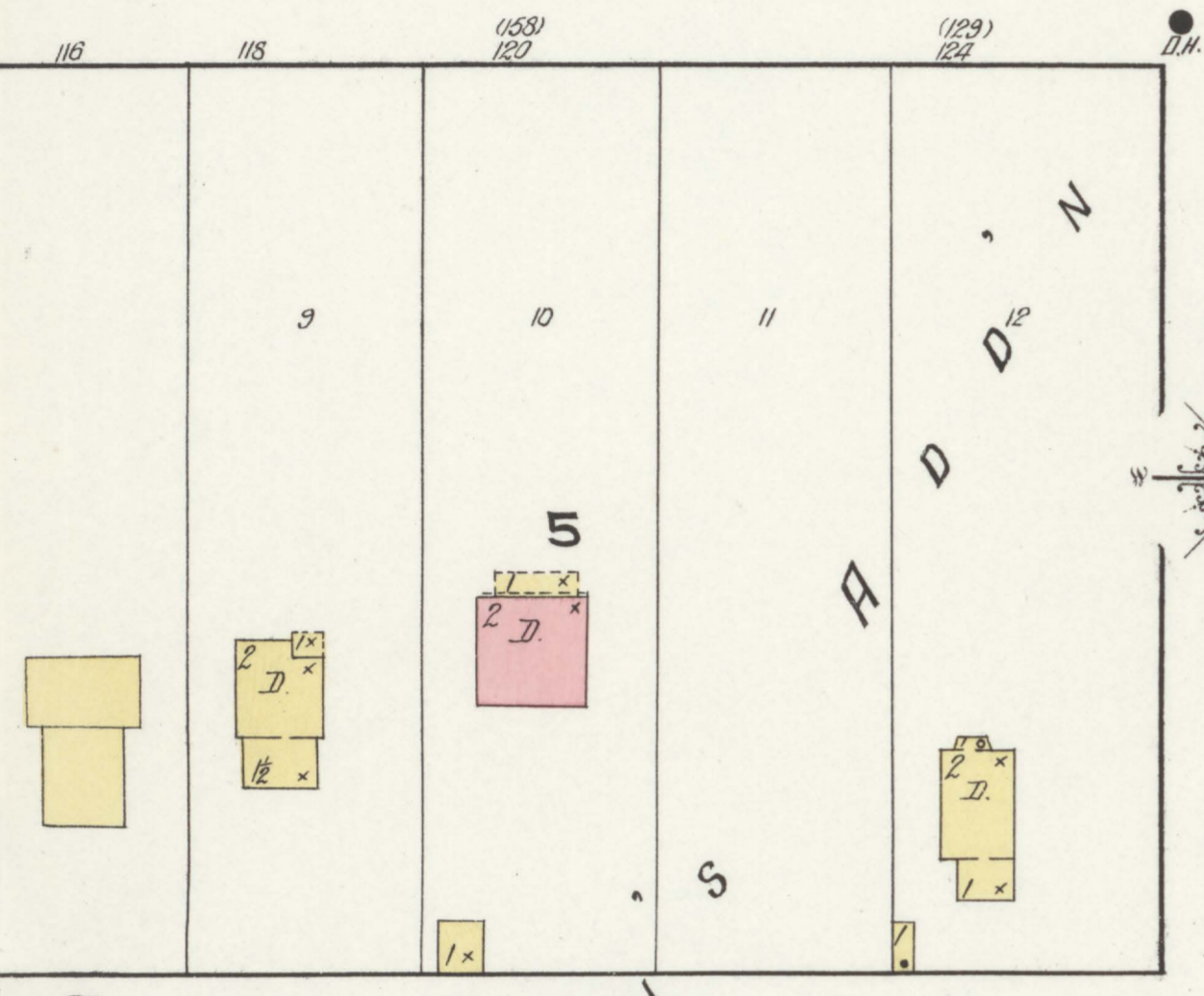
Lake

6

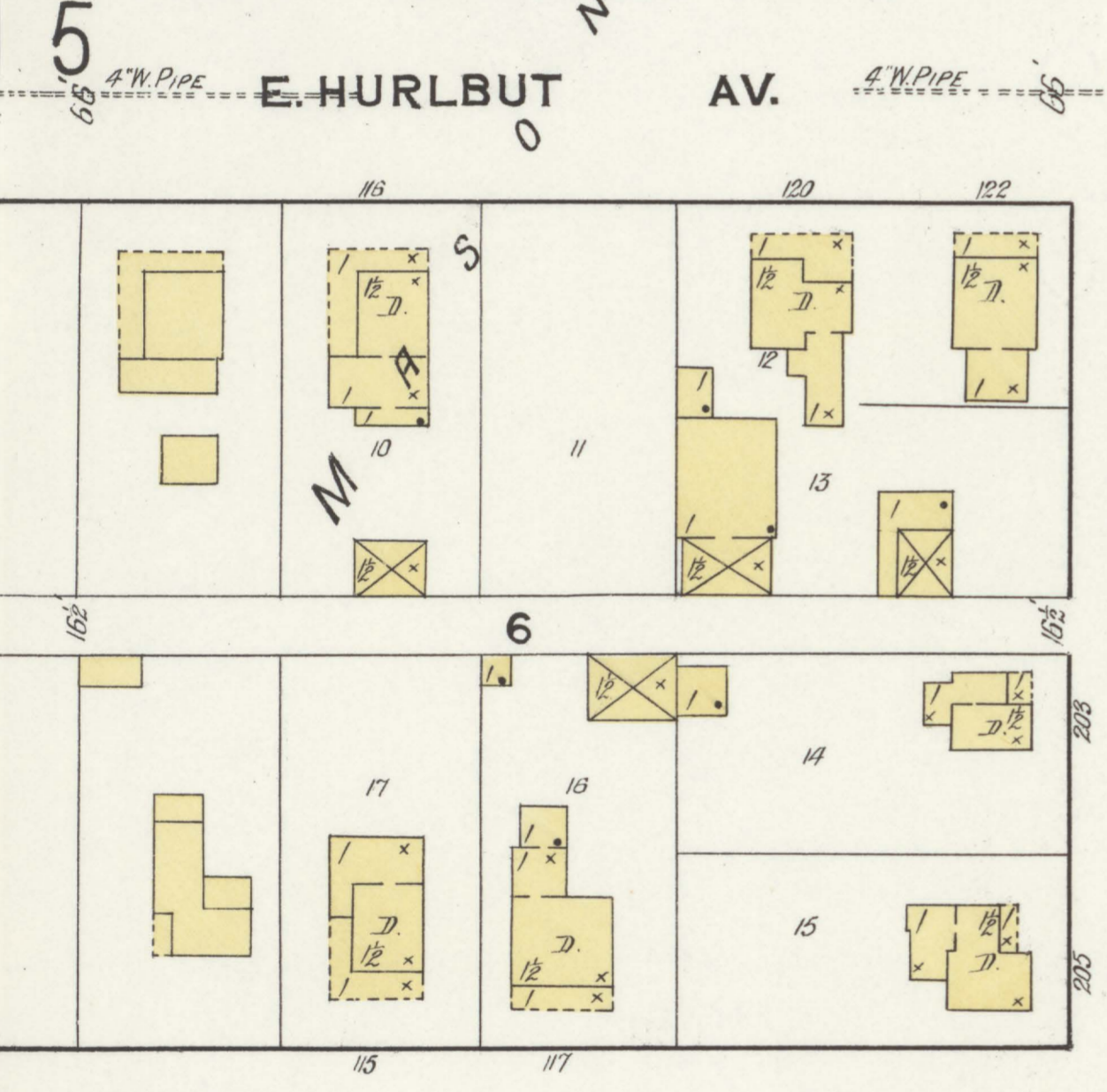
DEC. 1917
CHARLEVOIX
MICH.



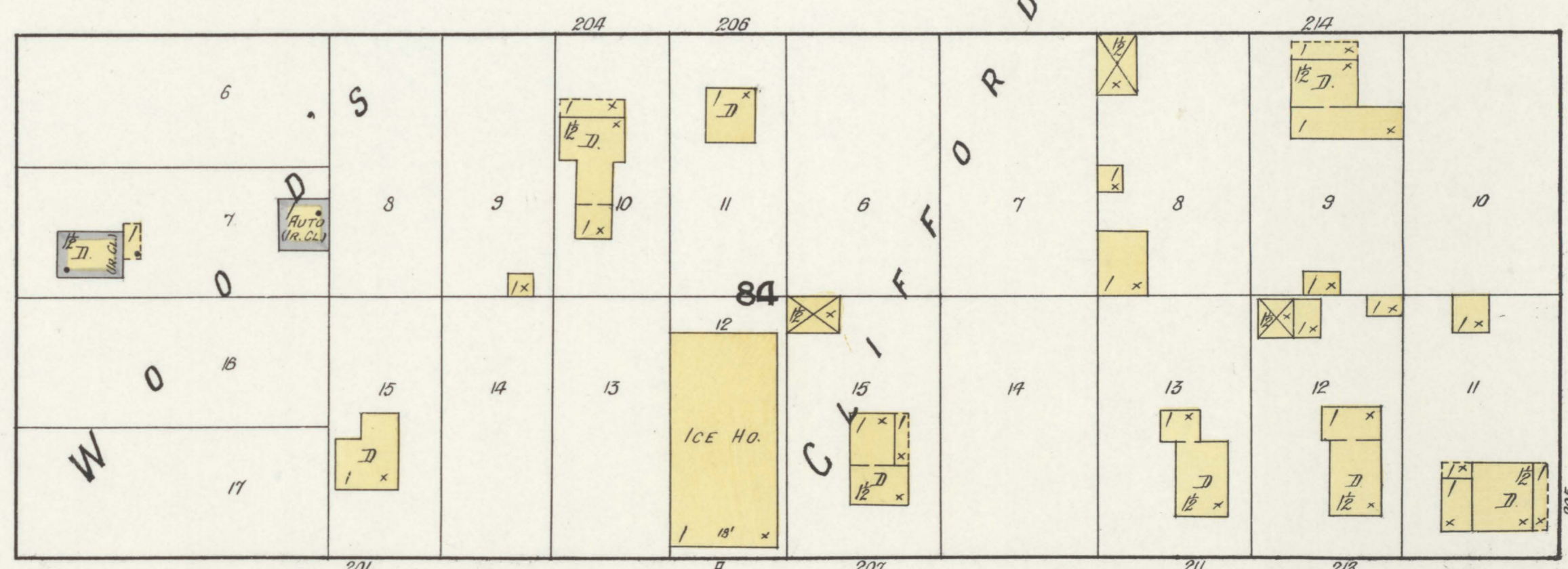
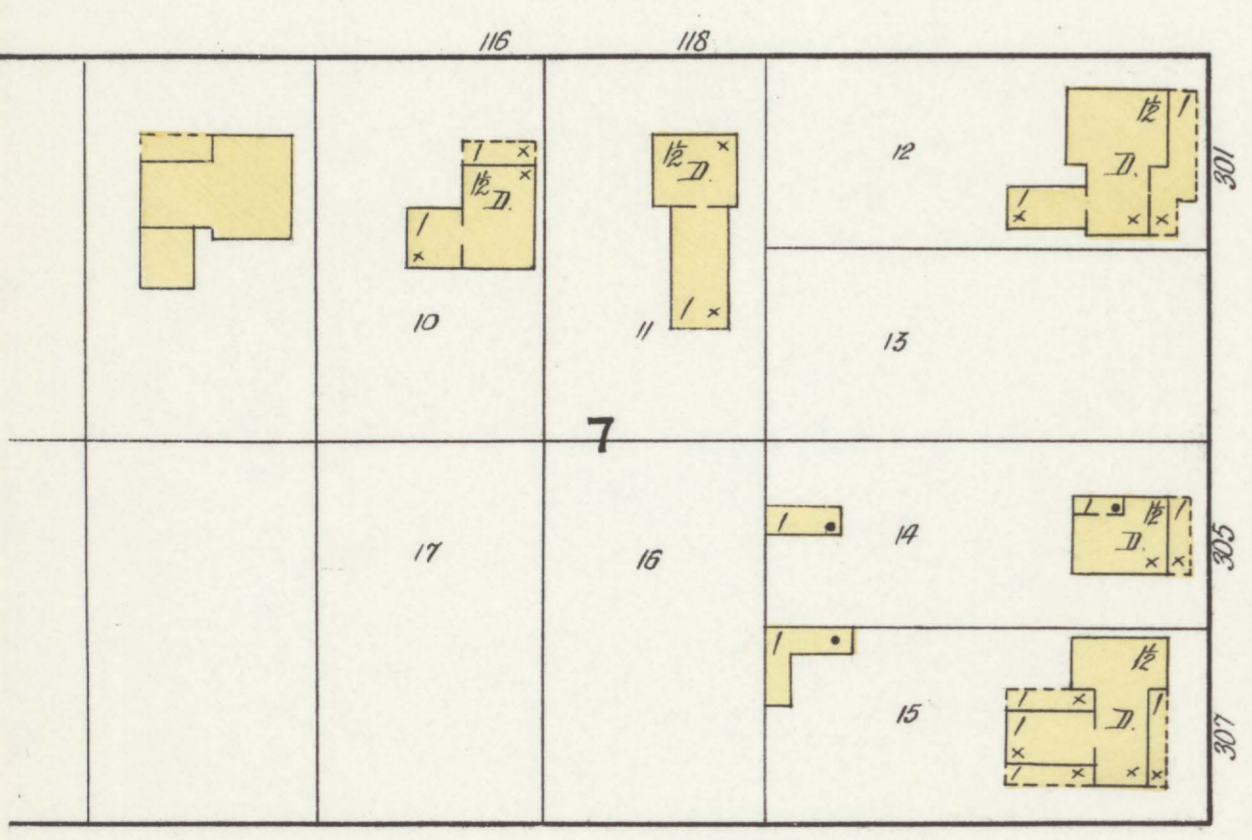
BELVEDERE AV.



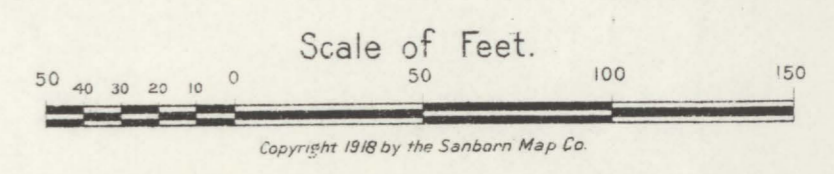
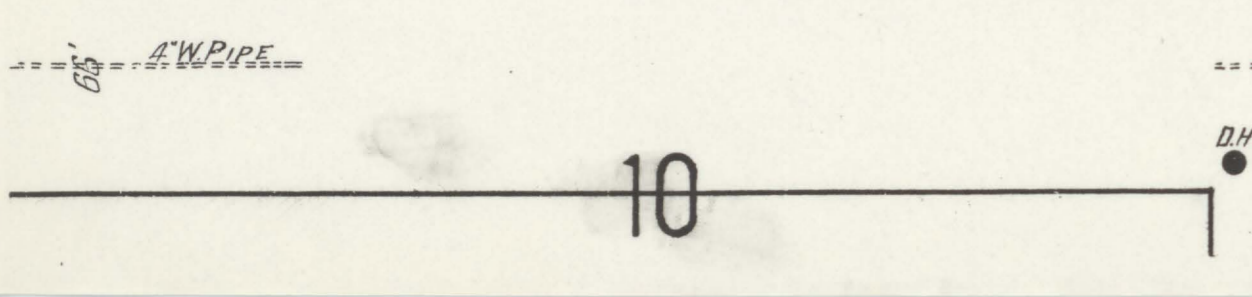
E. HURLBUT AV.



E. UPRIGHT AV.

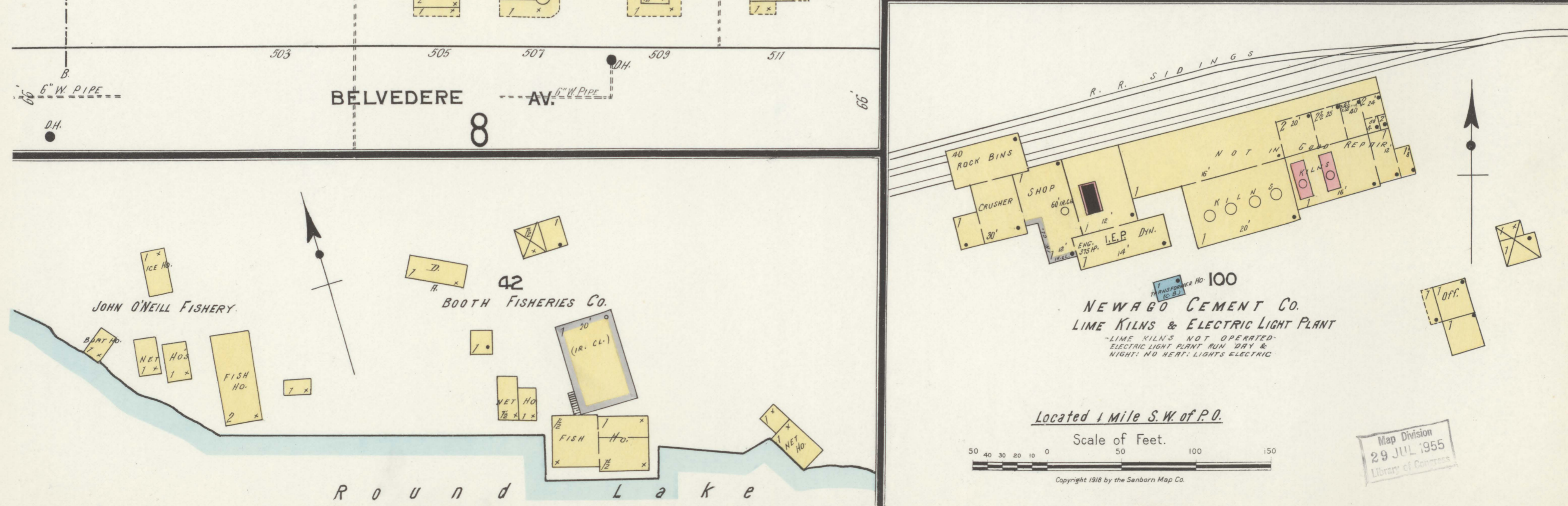
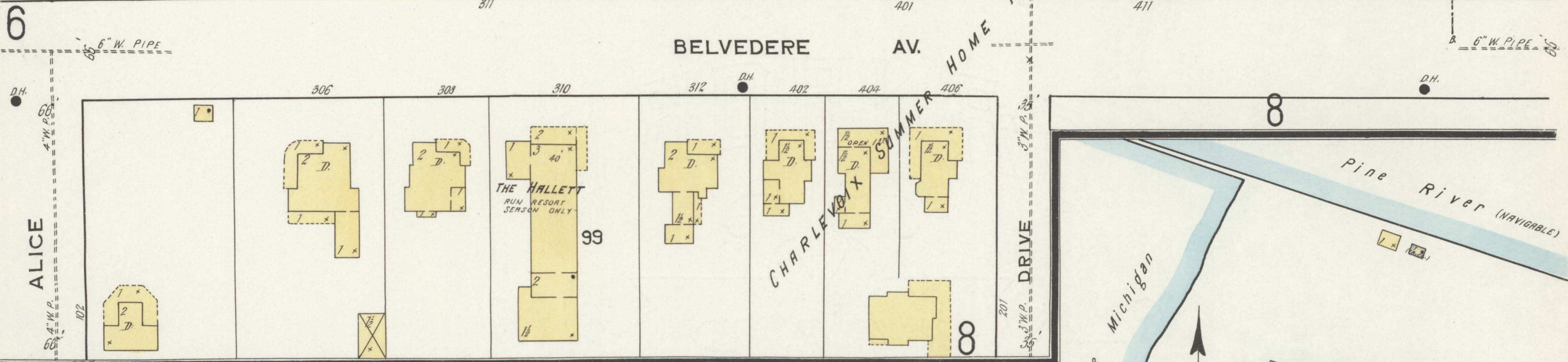


E. LINCOLN AV.



Map Division
29 JUL 1955
Library of Congress

DEC. 1917
CHARLEVOIX
MICH.



Map Division
29 JUL 1955
Library of Congress

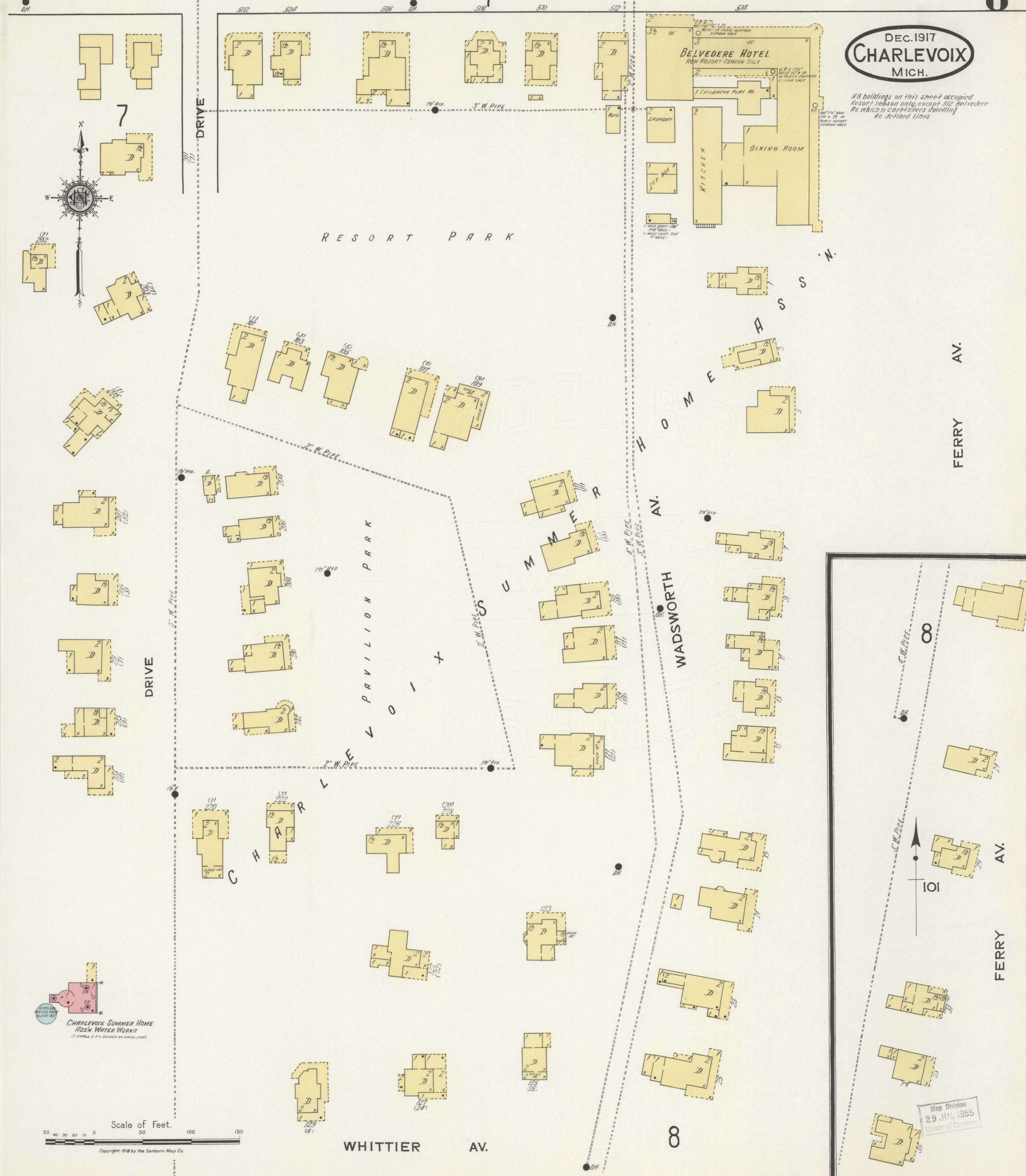
DEC. 1917
CHARLEVOIX
MICH.

All buildings on this sheet occupied
Resort season only, except 512 Belvedere
Av. which is caretakers dwelling
No defined lines

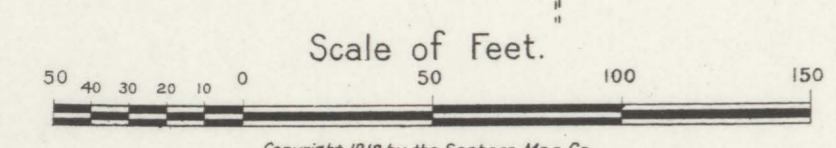
BELVEDERE AV.

6" W. PIPE

4" W. PIPE



CHARLEVOIX SUMMER HOME
ASSN. WATER WORKS
17-24 W. F. P. DRIVE AT BRIDGE, PAVILION



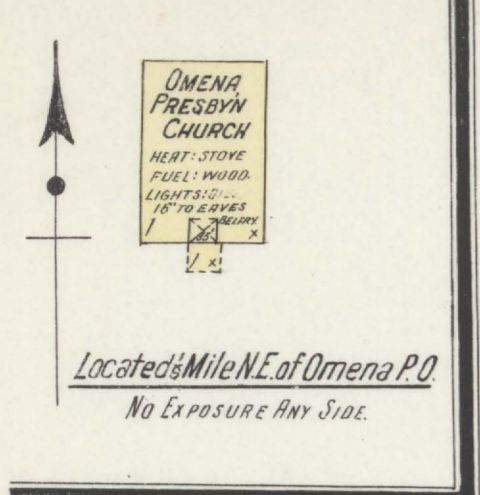
Copyright 1918 by the Sanborn Map Co.

Map Division
29 JUL 1955
Library of Congress

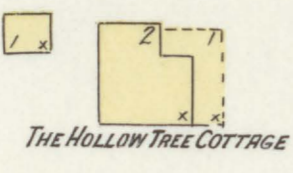
OMENA
LEE LANAU COUNTY, MICH.
Located 23 Miles S.W. of Charlevoix on Grand Traverse Bay

POPULATION: 300
PREVAILING WINDS: SOUTH
NO FIRE APP.
ALL RISKS AT OMENA TAKEN FROM SURVEY
OF MAY 1917, NOT CORRECTED 1917.

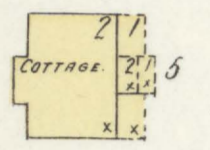
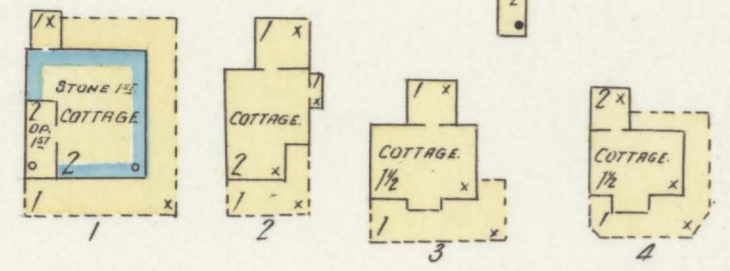
DEC. 1917
CHARLEVOIX
MICH.



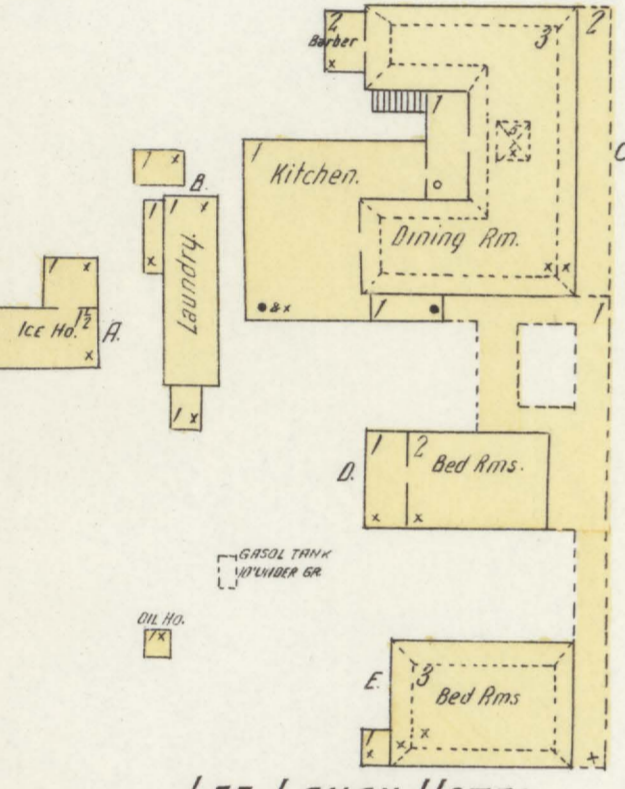
Located 1/2 Mile N.E. of Omens P.O.
No Exposure Any Side.



The Hollow Tree Cottage



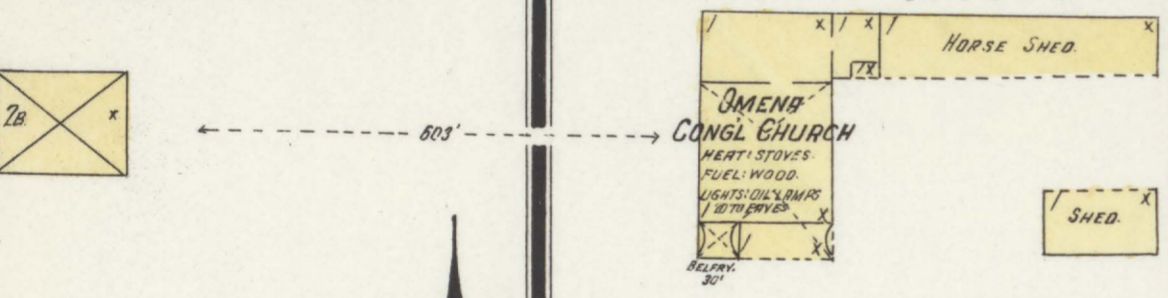
Cottage 5



LEE LANAU HOTEL

Closed in winter. Man lines in premises in winter.
HEAT: STOVES. LIGHTS: GAS. WATER PIPES IN HALLWAYS.

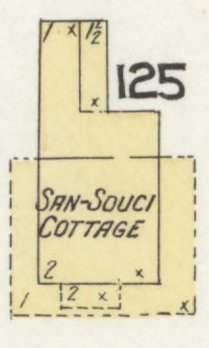
Located 1 Mile S.E. of Omens Post Office



OMENS CONGL CHURCH

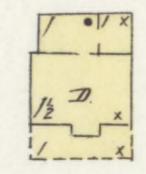
HEAT: STOVES
FUEL: WOOD
LIGHTS: 107 W. CAGES
17 W. CAGES

Located 1/4 Mile E. of Omens Post Office

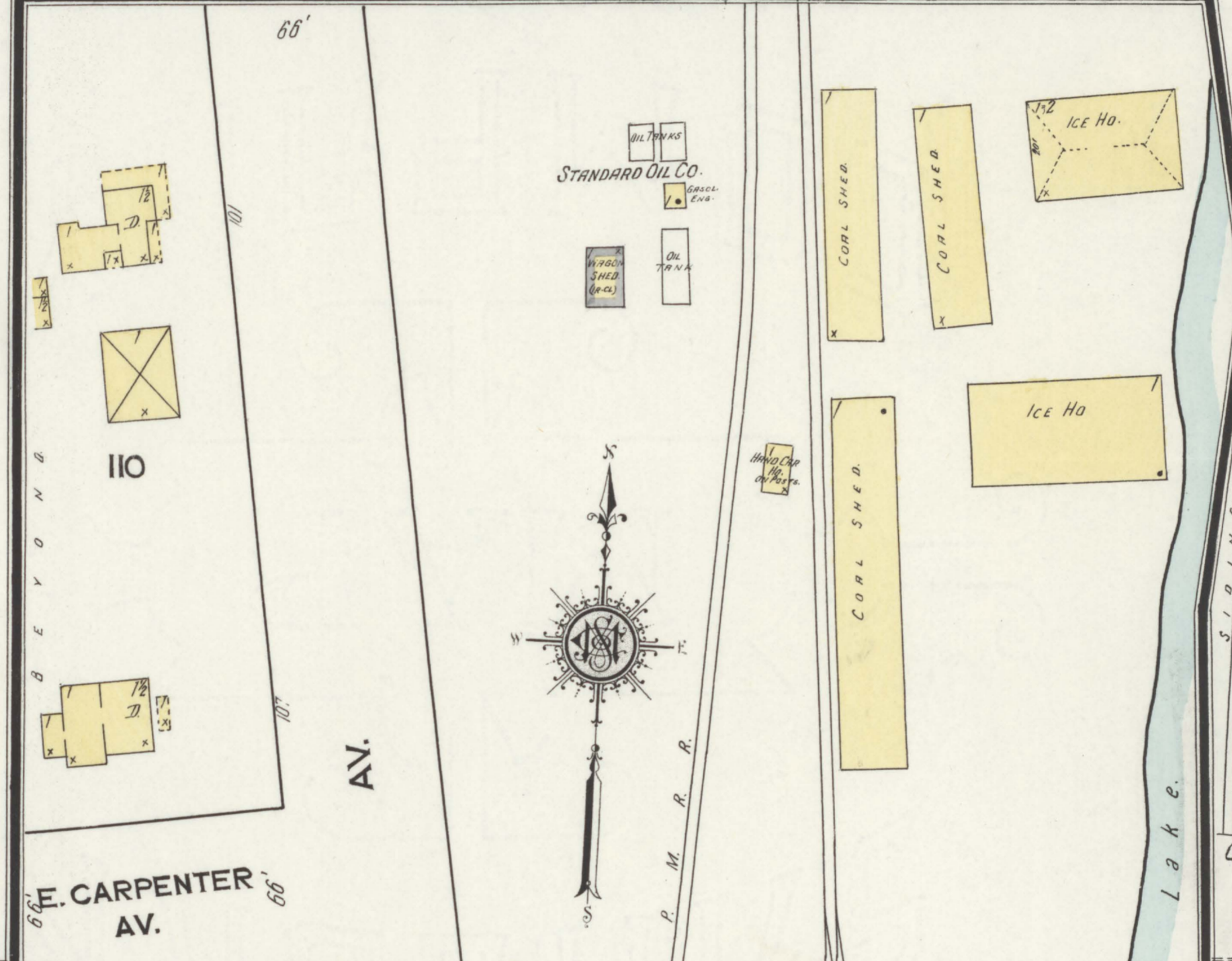


SAN-SOUCI COTTAGE

126



77' x 2 1/2 STY FR. D.



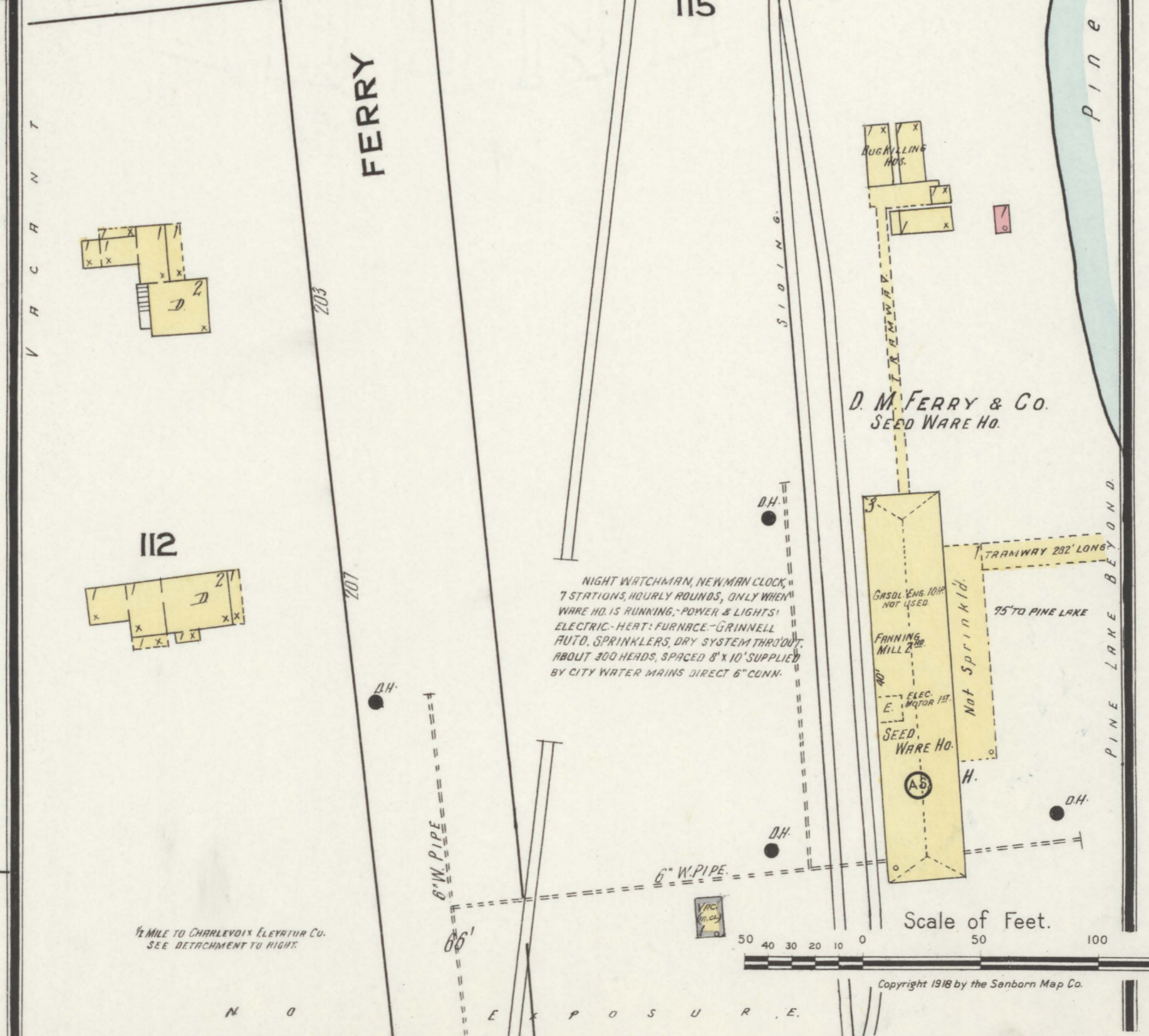
STANDARD OIL CO.

CHARLEVOIX ELEVATOR CO.

ELEVATOR: CAPY. 3000 GALS.
HEAT: STOVES. LIGHTS: ELECTRIC.
CLEANER: 25 BURN PICKERS.

WILLIAMS PICKLE CO.

SALTING STATION
ON POSTS.



D.M. FERRY & CO.

SEED WARE HO.

FORMERLY WEST MICHIGAN SUGAR CO.

OLD & ABANDONED.

NIGHT WATCHMAN, NEAR MAN CLOCK,
7 STATIONS, HOURLY ROUNDS, ONLY WHEN
WARE HO. IS RUNNING. POWER & LIGHTS
ELECTRIC. HEAT: FURNACE-GREENWELL
FUEL. SPRINKLERS: DRY SYSTEM THROUGH
ABOUT 400 HEADS, SPACED 8' x 10' SUPPLIED
BY CITY WATER MAINS DIRECT 6" CUM.

Scale of Feet.

Map Division
29 JUL 1955