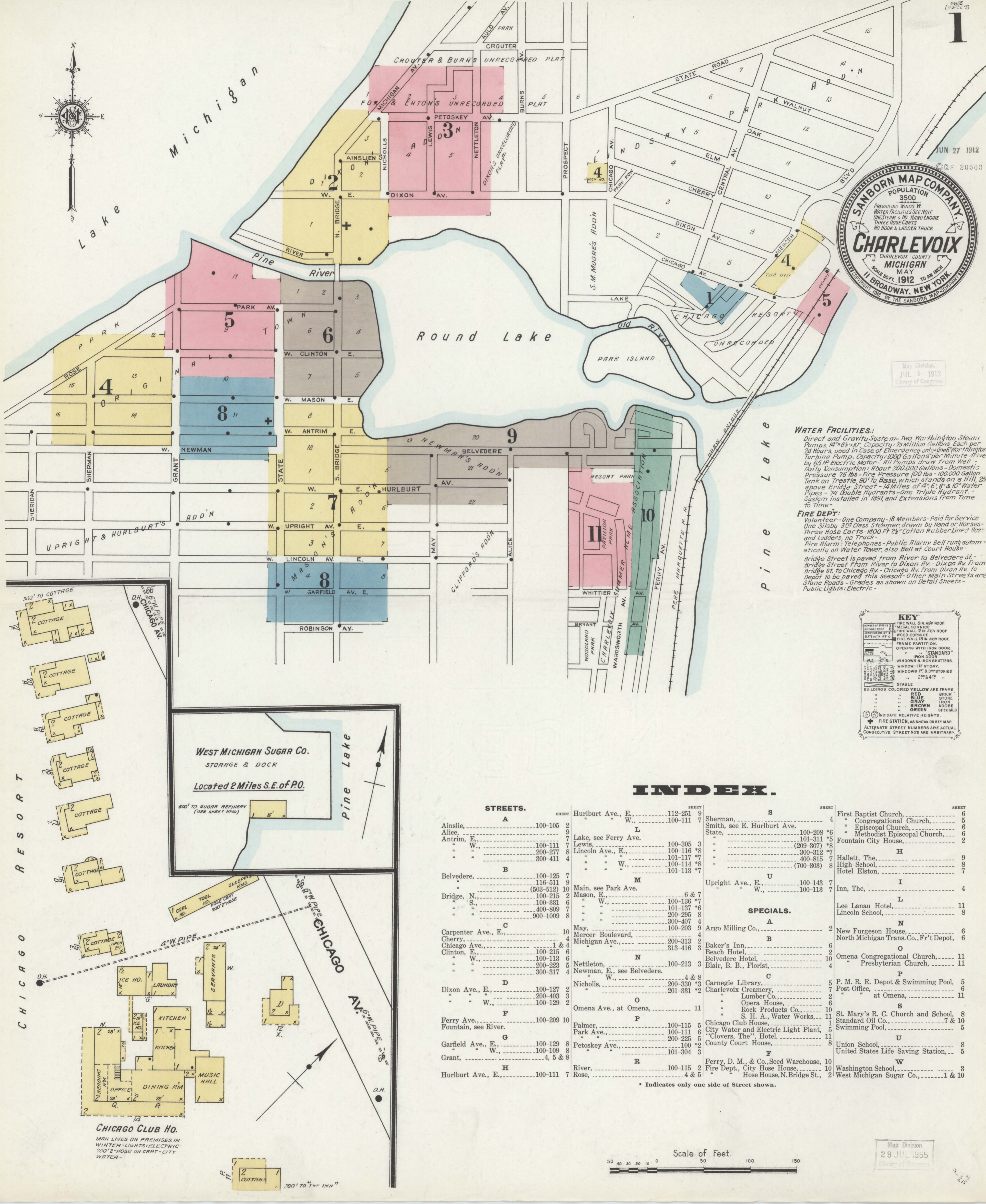
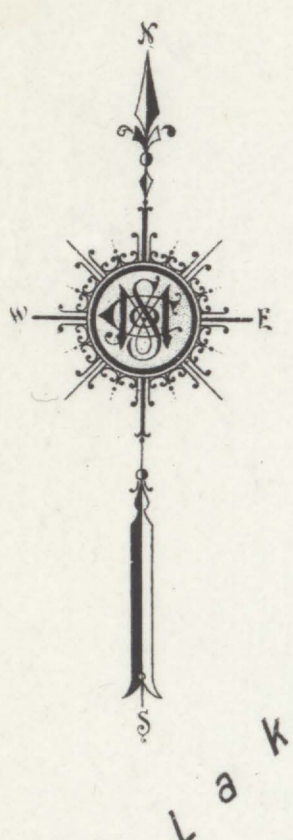


Map Division
JUL 9 1912
Library of Congress



WATER FACILITIES:
 Direct and Gravity System - Two Worthington Steam Pumps, 18" x 8" x 10", Capacity 1 1/2 Million Gallons Each per 24 Hours, used in case of Emergency only - One Worthington Turbine Pump, Capacity 1,000 Gallons per Minute driven by 65 HP Electric Motor - All Pumps draw from Well - Daily Consumption: About 200,000 Gallons - Domestic Pressure 25 lbs - Fire Pressure 100 lbs - 100,000 gallon tank on trestle, 30' to Base, which stands on a Hill, 25' above Bridge Street - 1 1/2 Miles of 4", 6", 8" & 10" Water Pipes - 74 Double Hydrants - One Triple Hydrant - System installed in 1891 and Extensions from Time to Time

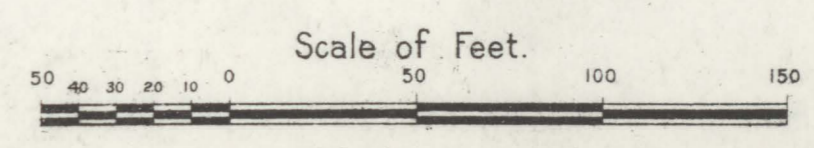
FIRE DEPT:
 Volunteer - One Company - 18 Members - Paid for Service One Sibley 32' Class 3 Reamer, drawn by Hand or Horses - Three Hose Carts - 1800 Ft 2 1/2" Cotton Rubber Lined Hoses and Ladders, no Truck - Fire Alarm: Telephones - Public Alarm: Bell rung automatically on Water Tower, also Bell at Court House - Bridge Street is paved from River to Belvedere St - Bridge Street from River to Dixon Av. - Dixon Av. from Bridge St. to Chicago Av. - Chicago Av. from Dixon Av. to Depot to be paved this season - Other Main Streets are Stone Roads - Grades as shown on Detail Sheets - Public Lights: Electric

KEY	
(Symbol)	FIRE WALL, 6 IN. ASB. ROOF
(Symbol)	FIRE WALL 12 IN. ASB. ROOF
(Symbol)	FIRE WALL 18 IN. ASB. ROOF
(Symbol)	WOOD CORNICE
(Symbol)	FRAME PARTITION
(Symbol)	OPENING WITH IRON DOOR
(Symbol)	" " " " STANDARD
(Symbol)	" " " " IRON DOOR
(Symbol)	WINDOWS & IRON SHUTTERS
(Symbol)	WINDOW - 1ST STORY
(Symbol)	WINDOWS 1ST & 3RD STORIES
(Symbol)	2ND & 4TH "
(Symbol)	STABLE
(Symbol)	BUILDINGS COLORED YELLOW ARE FRAME
(Symbol)	" " " " RED BRICK
(Symbol)	" " " " BLUE STONE
(Symbol)	" " " " GRAY IRON
(Symbol)	" " " " GREEN SPECIALS
(Symbol)	(Circled S) INDICATE RELATIVE HEIGHTS.
(Symbol)	(Star) FIRE STATION, AS SHOWN ON REV. MAP
(Symbol)	ALTERNATE STREET NUMBERS ARE ACTUAL
(Symbol)	CONSECUTIVE STREET NOS ARE ARBITRARY

INDEX.

STREETS.			
Hurlburt Ave., E.,	112-251	9	
W.,	100-111	7	
Lake, see Ferry Ave.			
Lewis, E.	100-305	3	
Lincoln Ave., E.,	100-116	8	
W.,	101-117	7	
" " W.,	100-114	8	
" " " W.,	101-113	7	
Belvedere,	100-125	7	
" " "	116-511	9	
" " "	(503-512)	10	
Bridge, N.,	100-215	2	
" " S.,	100-331	6	
" " "	400-809	7	
" " "	900-1009	8	
Carpenter Ave., E.,		10	
Cherry,		4	
Chicago Ave.,	100-215	2	
Clinton, E.,	100-113	6	
W.,	200-223	5	
" " "	300-317	4	
Dixon Ave., E.,	100-127	2	
" " W.,	200-403	3	
" " "	100-129	2	
Ferry Ave.,	100-209	10	
Fountain, see River.			
Garfield Ave., E.,	100-129	8	
W.,	100-109	8	
Grant,		4, 5 & 8	
Hurlburt Ave., E.,	100-111	7	
W.,			
Lake, see Ferry Ave.			
Lewis, E.	100-305	3	
Lincoln Ave., E.,	100-116	8	
W.,	101-117	7	
" " W.,	100-114	8	
" " " W.,	101-113	7	
Main, see Park Ave.			
Mason, E.,	6 & 7		
W.,	100-136	7	
" " "	101-137	6	
" " "	200-295	8	
" " "	300-407	4	
May, Mercer Boulevard,		4	
Michigan Ave.,	200-313	2	
" " "	313-416	3	
Nettleton, W.,	100-213	3	
Newman, E., see Belvedere.			
W.,	4 & 8		
Nicholis,	200-330	3	
" " "	201-331	2	
Omena Ave., at Omena,		11	
Palmer,	100-115	5	
Park Ave.,	100-111	6	
" " "	200-225	5	
Petoskey Ave.,	100	2	
" " "	101-304	3	
River,	100-115	2	
Rose,	4 & 5		
Sherman,		S	
Smith, see E. Hurlburt Ave.			
State,	100-208	*6	
" " "	101-311	*5	
" " "	(209-307)	*8	
" " "	400-319	*7	
" " "	400-315	*7	
" " "	(700-803)	*8	
Upright Ave., E.,	100-143	7	
W.,	100-113	7	
Argo Milling Co.,		2	
Baker's Inn,		6	
Beach Hotel,		2	
Belvedere Hotel,		10	
Blair, B. B., Florist,		4	
Carnegie Library,	5		
Charlevoix Creamery,	7		
Lumber Co.,	2		
Opera House,	6		
Rock Products Co.,	10		
S. H. A., Water Works,	11		
Chicago Club House,	5		
City Water and Electric Light Plant,	1		
"Clovers, The", Hotel,	11		
County Court House,	8		
Ferry, D. M., & Co., Seed Warehouse,	10		
Fire Dept., City Hose House,	10		
Hose House, N. Bridge St.,	2		
First Baptist Church,	6		
Congregational Church,	5		
Episcopal Church,	6		
Methodist Episcopal Church,	6		
Fountain City House,	2		
Hallett, The,	9		
High School,	8		
Hotel Elston,	7		
Inn, The,	4		
Lee Lanau Hotel,	11		
Lincoln Hotel,	8		
New Furguson House,	6		
North Michigan Trans. Co., Fr't Depot,	6		
Omena Congregational Church,	11		
Presbyterian Church,	11		
P. M. R. R. Depot & Swimming Pool,	5		
Post Office, at Omena,	11		
Standard Oil Co.,	7 & 10		
Swimming Pool,	5		
St. Mary's R. C. Church and School,	8		
Union School,	8		
United States Life Saving Station,	5		
Washington School,	3		
West Michigan Sugar Co.,	1 & 10		

* Indicates only one side of Street shown.

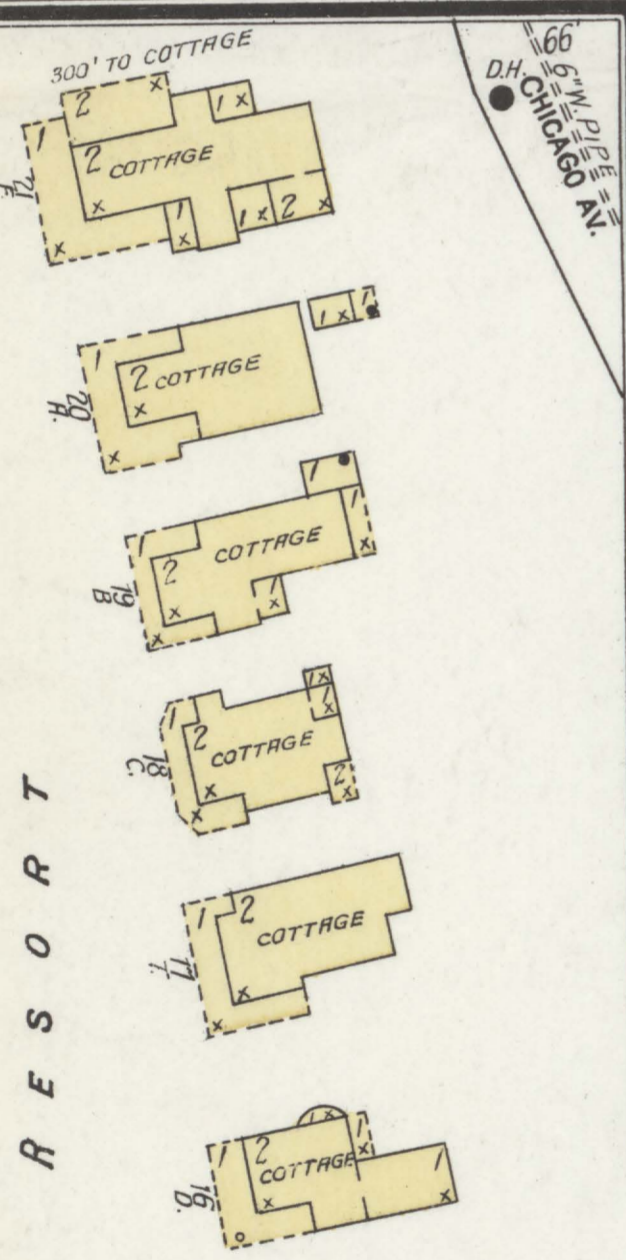
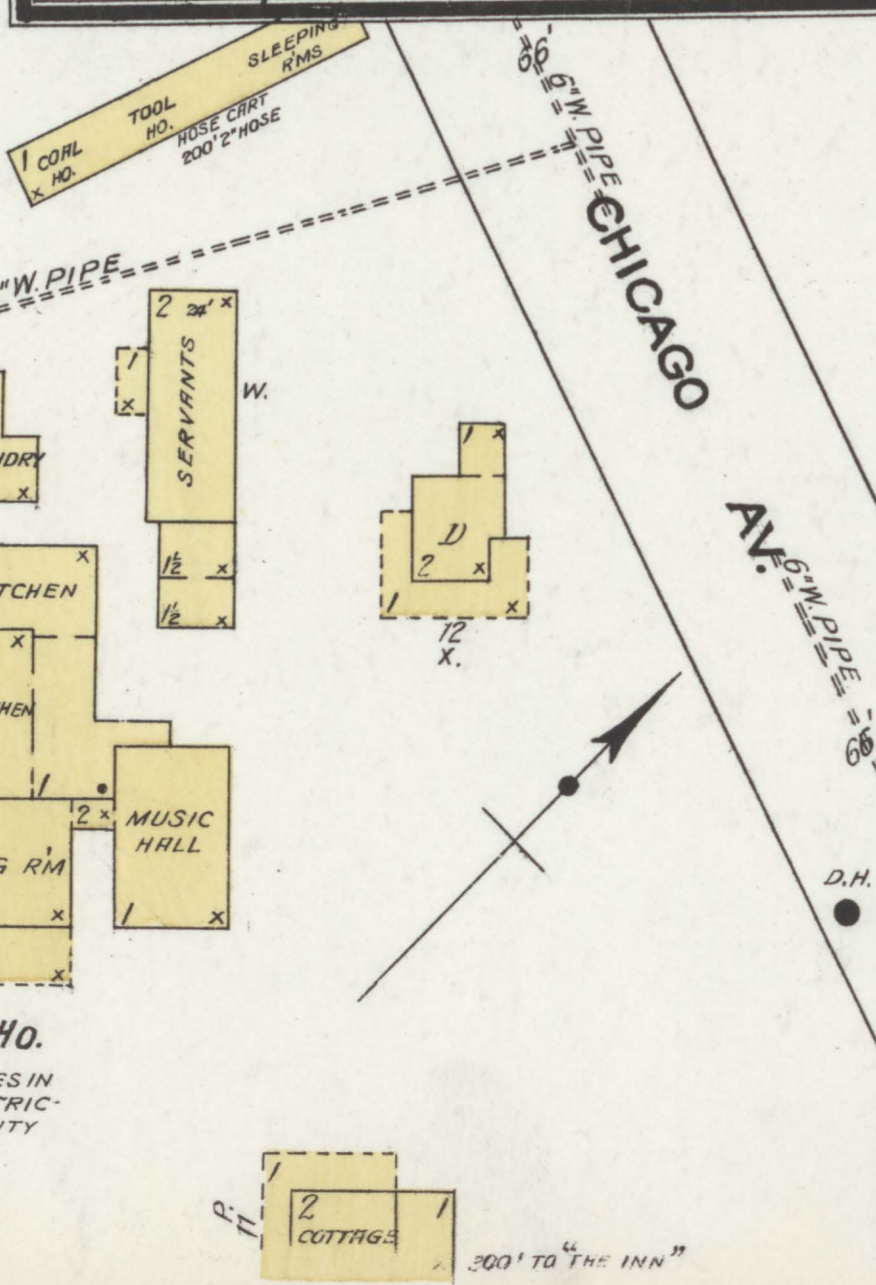


Map Division
29 JUL 1955
Library of Congress

WEST MICHIGAN SUGAR CO.
 STORAGE & DOCK
 Located 2 Miles S.E. of P.O.

CHICAGO CLUB HO.
 MAN LIVES ON PREMISES IN WINTER - LIGHTS - ELECTRIC - 200' HOSE ON CART - CITY WATER

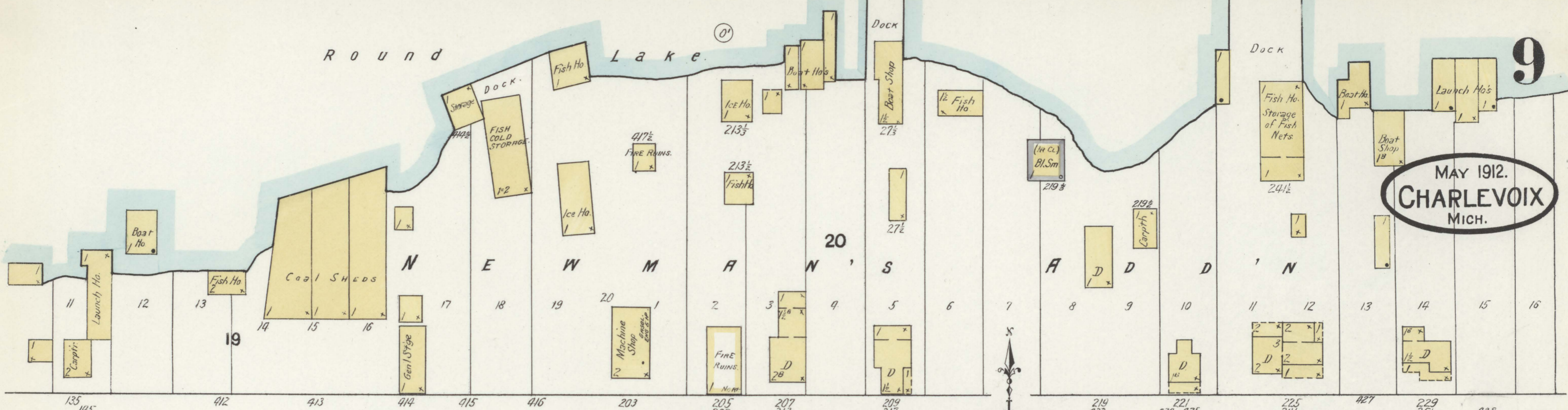
CHICAGO RESORT



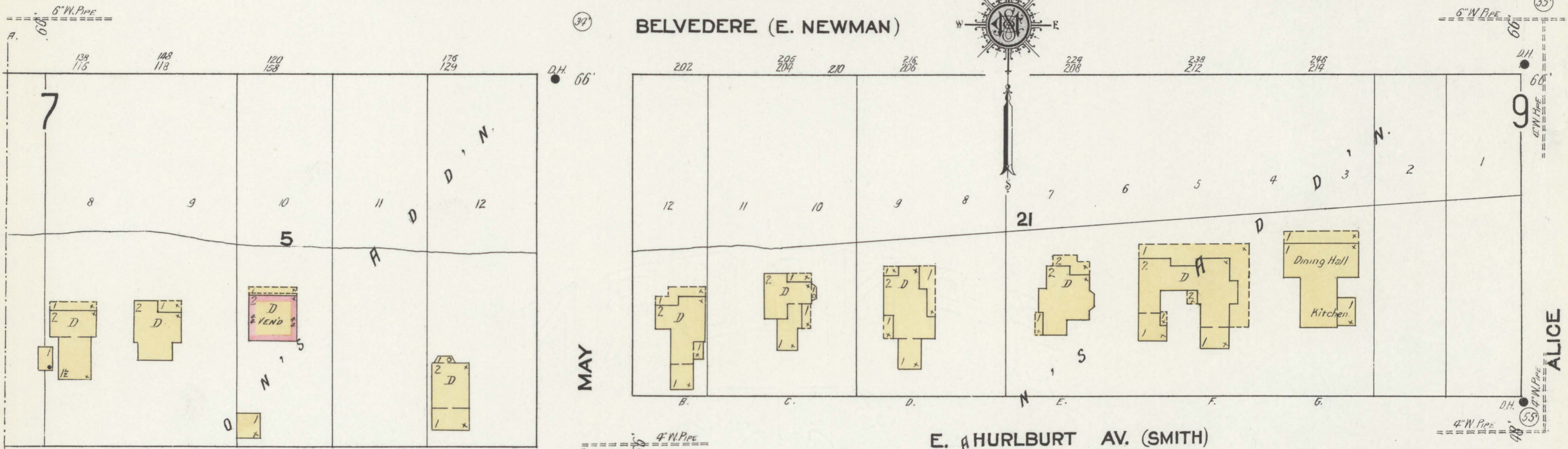
Round Lake

9

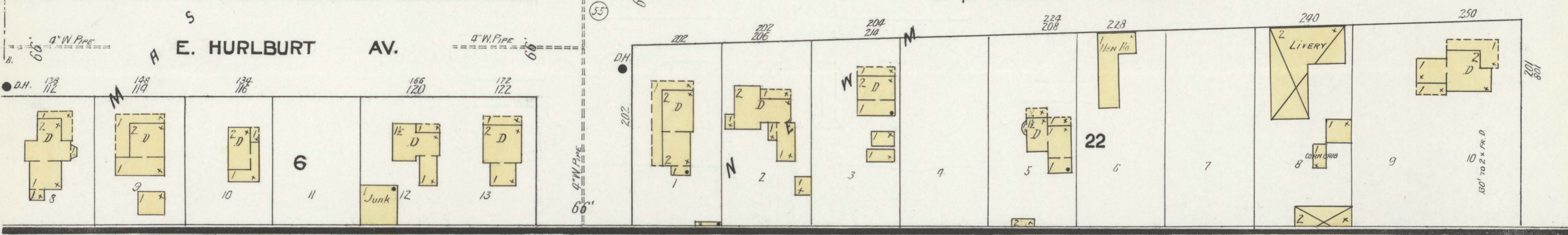
MAY 1912.
CHARLEVOIX
MICH.



BELVEDERE (E. NEWMAN)

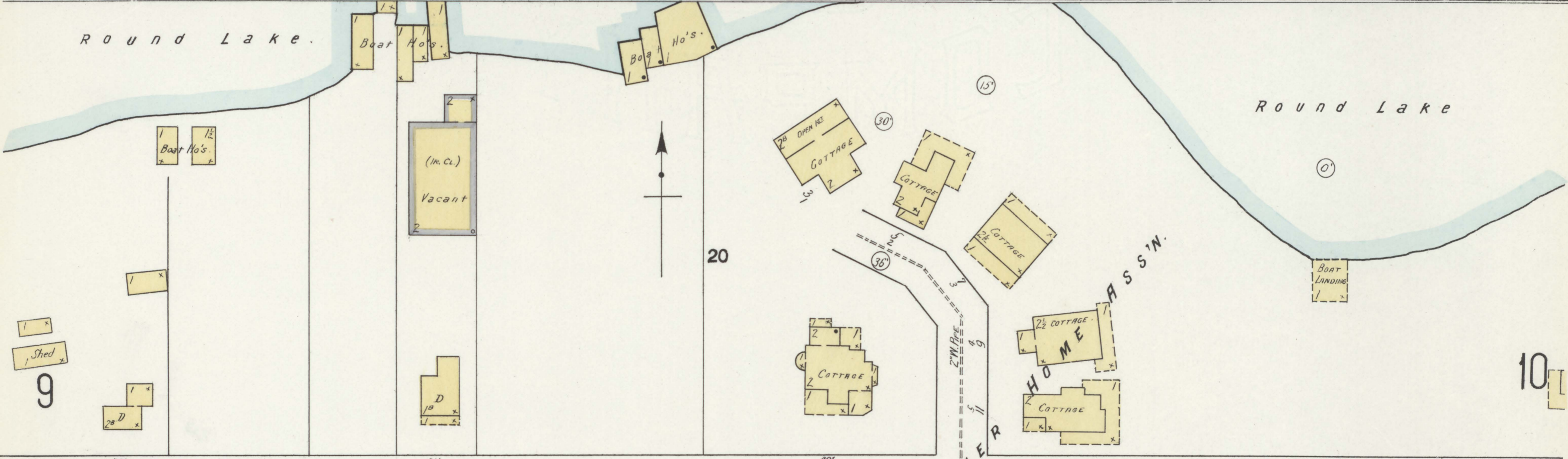


E. HURLBURT AV. (SMITH)

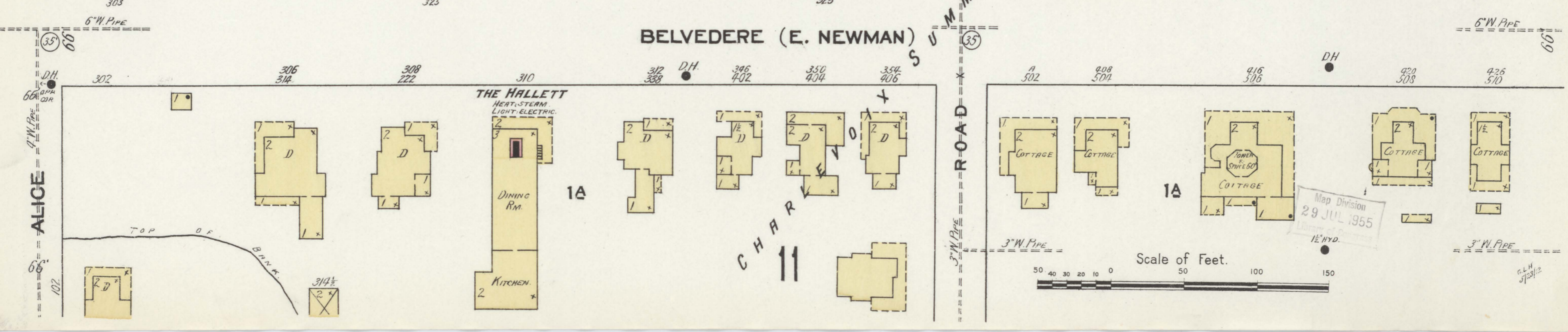


Round Lake

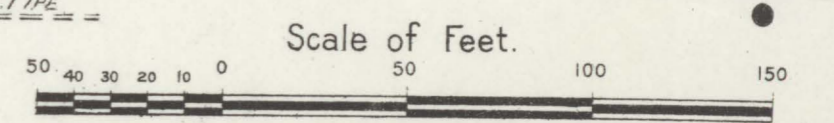
Round Lake



BELVEDERE (E. NEWMAN)



Map Division
29 JUL 1955



Round Lake

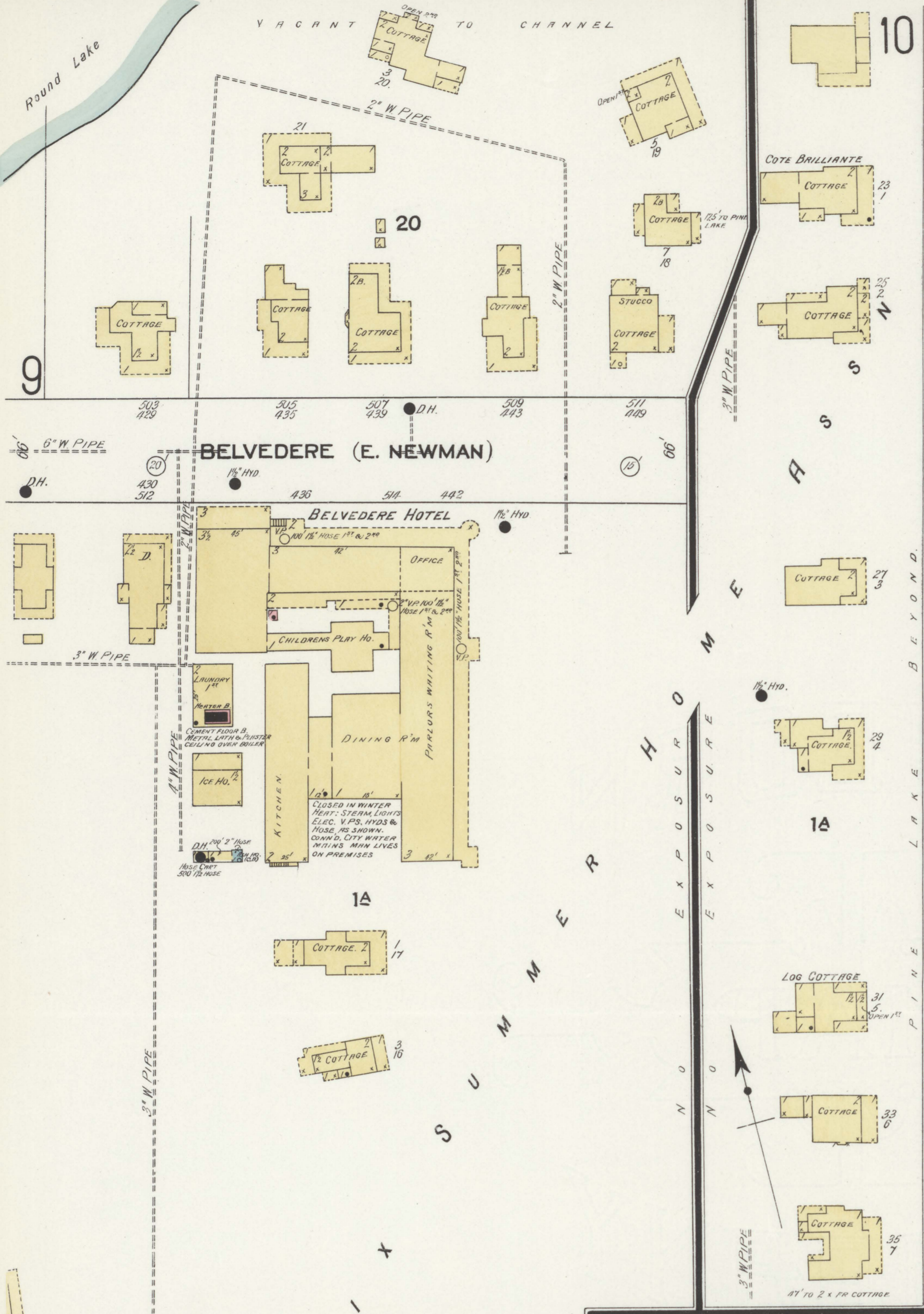
VACANT TO CHANNEL

66' N O EXPOSURE

MAY 1912. CHARLEVOIX MICH.

10

Located 1/4 Miles S.E. of P.O.



BELVEDERE (E. NEWMAN)

BELVEDERE HOTEL

E. CARPENTER AV.

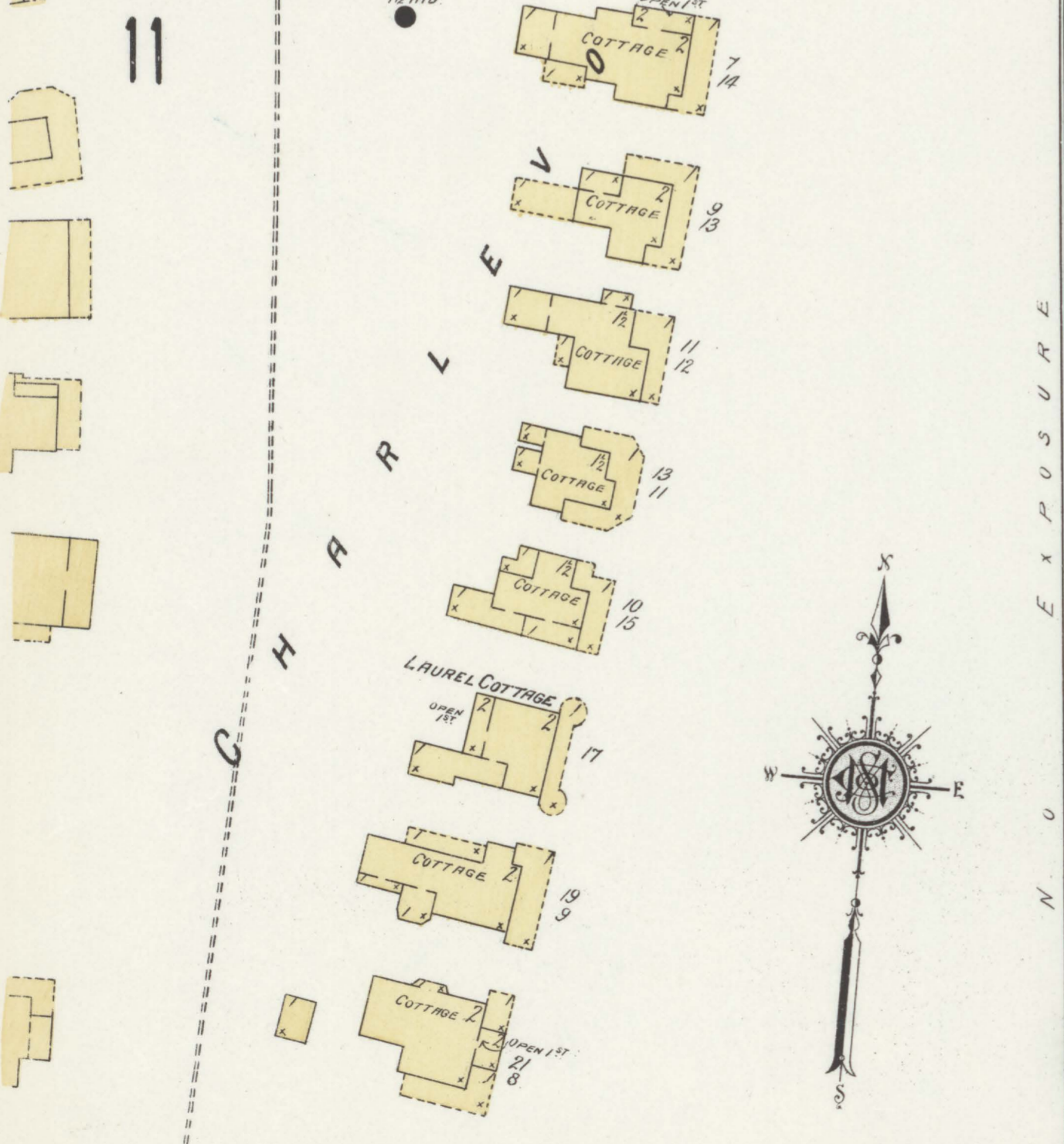
FERRY AV.

3A

D. M. FERRY & CO. SEED WARE HO.

NIGHT WATCHMAN, NEWMAN CLOCK, 7 STATIONS, HOURLY ROUNDS, ONLY WHEN W. NO. 13 RUNNING POWER. ELEC. - HEAT. - FURN. - LIGHTS. - ELEC. GRINNELL AUTO. SPRINKLERS. DRY SYSTEM. TWO WIT ABOUT 300 HEADS SPACED 8' X 8', SUPPLIED BY CITY WATER MAINS DIRECT CONNECTION

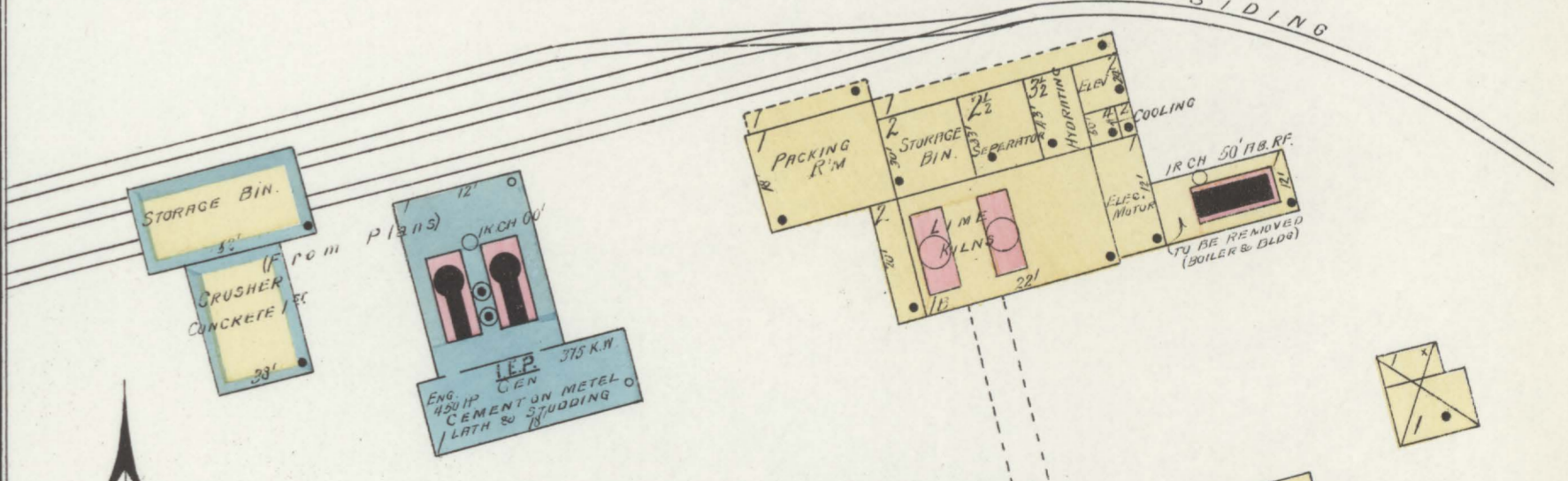
FIRE DEPT CITY HOSE NO. 10 HAND HOSE CART 300' 2 1/2\"/>



WEST MICHIGAN SUGAR CO. (BLDG. VACANT)

SUGAR W. HO.

Located 2 Miles S.E. of P.O. NO EXPOSURE ANY SIDE



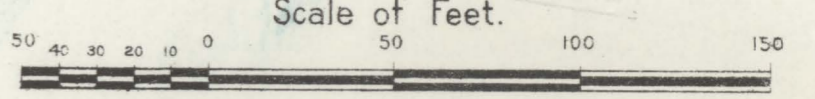
CHARLEVOIX ROCK PRODUCTS CO.

NIGHT WATCHMAN, NO CLOCK, ALSO 3 MEN ON DUTY NIGHTS, TO RUN NIGHT & DAY AFTER JUNE 1st. - POWER & LIGHTS. - ELEC. - 1 ELEC. AGENT. - STEAM - FUEL. COAL. - 12 CHEMICAL EXTING. DISTRIBUTED, 200' HOSE & HOSE CONNECTION ON ER. FL. - 2 SMITH VILLE FR FOR PIPE & MFG. PURPOSES (4 1/2\"/>

Located 1 Mile S.W. of P.O. NO EXPOSURE ANY SIDE

Map Division 29 JUL 1955

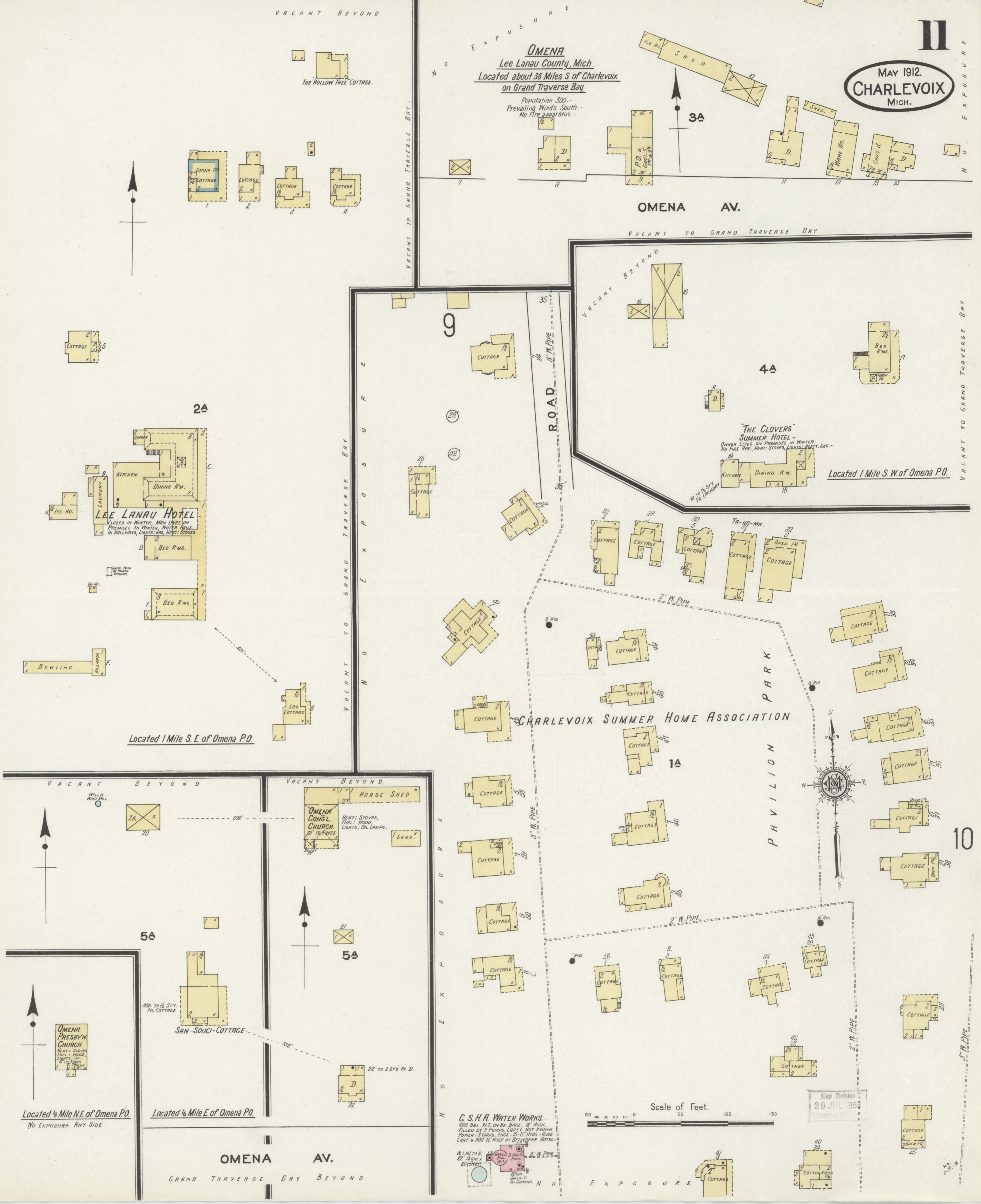
Scale of Feet.



MAY 1912.
CHARLEVOIX
MICH.

OMENA
Lee Lanau County, Mich.
Located about 36 Miles S. of Charlevoix
on Grand Traverse Bay

Population 300 -
Prevailing Winds South -
No Fire apparatus -



LEE LANAU HOTEL
CLOSED IN WINTER. MEN LIVE ON PREMISES IN WINTER. WATER PAILS IN HALLWAYS. LIGHTS: GAS. HEAT: STOVES.

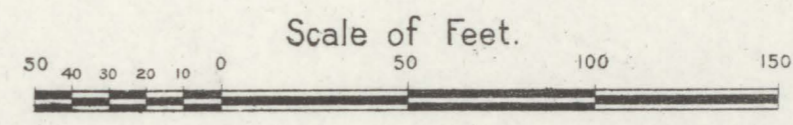
THE CLOVERS SUMMER HOTEL
OWNER LIVES ON PREMISES IN WINTER. NO FIRE APP. HEAT: STOVES. LIGHTS: BATTERY GAS.

CHARLEVOIX SUMMER HOME ASSOCIATION

OMENA CONGL. CHURCH
HEAT: STOVES, FUEL: WOOD. LIGHTS: OIL LAMPS.

OMENA PRESBYN CHURCH
HEAT: STOVES. FUEL: WOOD. LIGHTS: OIL. 6 TOL. SPACES.

C. S. H. A. WATER WORKS.
500 GAL. W.T. ON BR. BASE, 18\"/>



Map Division
29 JUL 1955
Library of Congress

Located 1/4 Mile NE of Omena P.O.
NO EXPOSURE ANY SIDE

Located 1/4 Mile E of Omena P.O.

OMENA AV.
GRAND TRAVERSE BAY BEYOND

5\"/>