

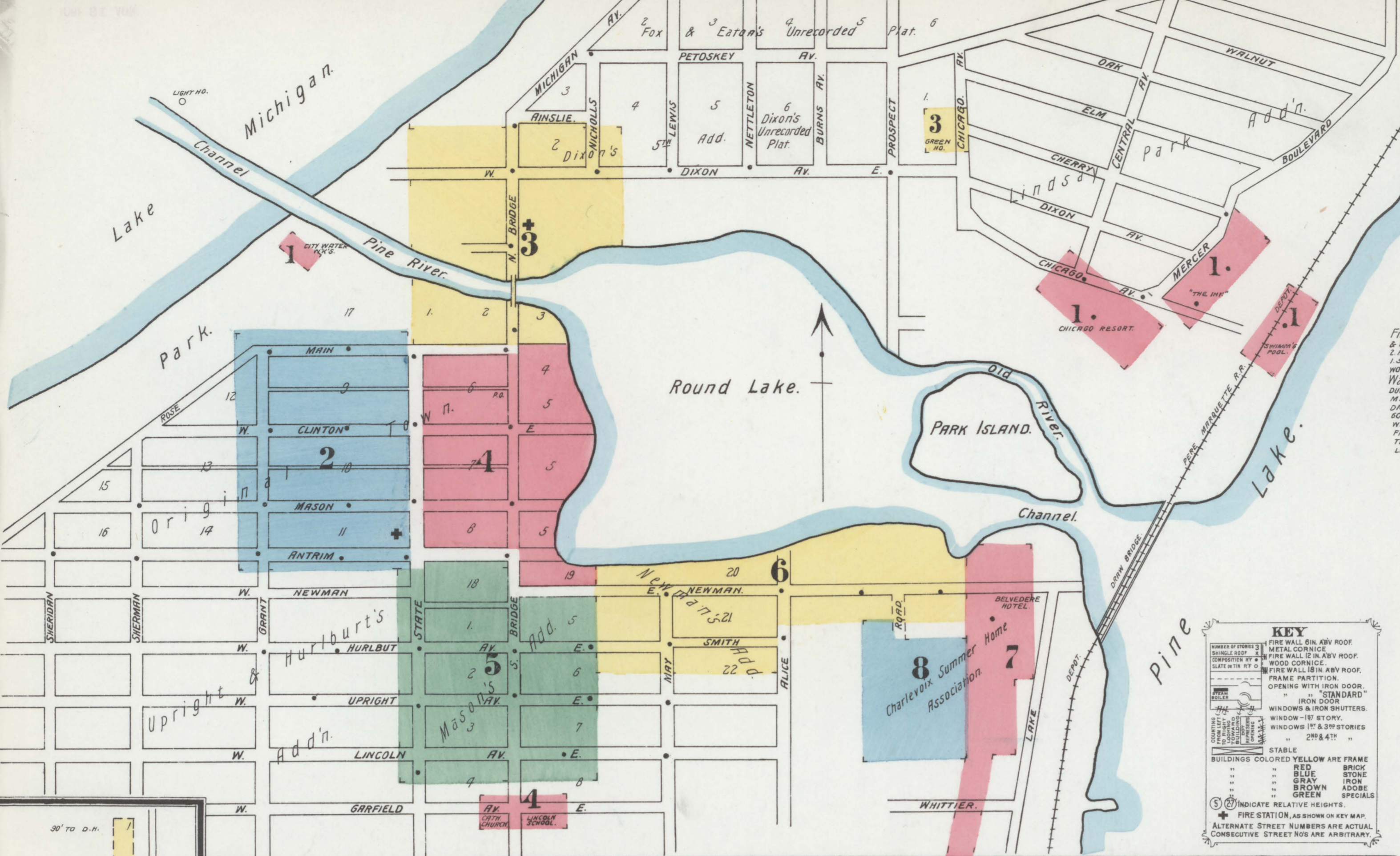
**SANBORN - PERRIS MAP CO. LIMITED**  
 11 Broadway  
 NEW YORK

Population 3,200  
 1. Steam & No Hand Engines  
 2. Independent Hose Carts  
 Water Facilities See Note.

Prevailing Winds West.  
**CHARLEVOIX**  
 Charlevoix County, MICH.  
 SEPT. 1901.  
 SCALE 50 FT. TO AN INCH.

THE LIBRARY OF CONGRESS  
 Two Copies Received  
 NOV. 13 1901  
 CHARLEVOIX  
 CLASS. 2. 23. 194  
 1268  
 COPY 2

Library of Congress  
 No. 10540  
 Maps & Charts



**NOTE.**  
 Fire Dept: 2 VOLUNTEER FIRE COS. 16 MEMBERS IN NO. 1. 2nd in NO. 2. PAID EACH RUN. 1000' 2 1/2" C.R.L. HOSE. 2 HOSE NOS. 2 HAND HOSE CARTS. LADDERS ON CARTS. NO H. & L. TRUCK. 1 SILS-BEE STEAMER DRAWN BY TEAM OR HAND. HAND ENGINE WORK OUT.  
 Water Facilities: DIRECT SYSTEM OWNED BY CITY. 2 WORTHINGTON DUPLEX PUMPS. 4 1/2" 30' 10" DRIVE FROM WELL NEAR LAKE MICHIGAN. CAP. OF PUMPS 1/2 MILLION GALS. ER. IN 2 1/2 HOURS. DAILY CONSUMPTION 200,000 GALS. DOMESTIC PRESSURE 60 LBS. FIRE PRESSURE 40-120 LBS. 2 1/2" W.C. 2 1/2" W.P. WATER PIPES. 65 D. H.S. FIRE ALARM BELL ON HOSE TOWER & WATER WORKS WHISTLE TELEPHONES THROUGHOUT CITY. STREETS UNPAVED. LIGHTS: ELEC. CRADLES AS SHOWN.

**INDEX.**

For "OMENA," see Sheet 8.

STREETS.	SECT.	Barlett Ho.,	SECT.
Alice, A	6	Beach Hotel,	4
Antrim, E., 100-115 4	6	Belvedere Hotel,	3
" W., 100-138 5	6	Blair, B. B., Florist,	3
" " 101-141 4	6	Charlevoix Electric Light Sta. and Water-works,	1
" " 200-311 2	6	" Lumber Co.,	3
Bridge, N., 100-319 3	6	" Roller-mills,	3
" S., 100-120 3	6	" Summer Home Association's Bldgs, 6, 7 & 8	8
" " 200-417 4	6	" Summer Home Association's Water-works	8
" " 500-508 4	6	Chicago Club Ho.,	1
" " 501-509 5	6	" Clovers, The,	8
" " 510-513 5	6	" County Court House,	2
" " near Garfield 4	6	" Cram & Whitford, Sawmill,	7
Clinton, E., 100-125 4	6	Elton Hotel, The,	5
" W., 100-141 4	6	Episcopal Church,	4
" " 200-305 2	6	Ferry, D. M., & Co., Seed W. H.	7
Dixon, E., 100-211 3	6	First Baptist Church,	4
" W., 100-140 3	6	" Congregational Church,	2
Fountain, arbitrary,	3	" Fountain City Ho.,	3
Garfield, E., 100-131 4	6	" Fox's Dock,	3
Grant, " 200-505 2	6	Geiken Ho.,	5
Hurlburt Ave., E., 100-137 5	6	High School,	2
" " 138-173 6	6	Inn, The,	1
" W., 100-203 5	6	Lee Lanau Hotel,	8
Lincoln Ave., E., 100-141 5	6	Lincoln School,	4
" W., 100-203 5	6	Marcier, L. J., Boat Builder,	6
Main, " 100-140 4	6	" Meth. Episc. Church,	4
" " 101-143 3	6	" Michigan Shave Shingle Co.,	1
" " 200-305 2	6	" Noble Ho.,	4
Mason, E., 100-111 4	6	" Omema Congregational Church,	8
" W., 100-137 4	6	" " Inn,	1
May, " 200-507 2	6	" " Presbyterian Church,	8
" " 508-513 5	6	" Opera Ho.,	3
Newman, E., 100-132 5	6	P. M. R. R. Depot,	1
" " 101-133 4	6	" " Inn,	1
" " 134-227 6	6	" " Swimming Pool,	1
" " 428-449 7	6	St. Mary's Catholic Church,	4
Smith, " 200-251 6	6	Standard Oil Co., Warehouse,	7
State, " 200-416 4	6	Steamboat Dock,	4
" " 201-507 2	6	Stover, M., & Co., Planing-mill, &c.,	7
" " 500-508 5	6	Union School,	2
" " 508-513 5	6	Washburn, O. S., Machine and Blacksmith Shop,	4
Upright Ave., E., 100-139 5	6	" Williams, G. G., Bowl Factory,	7
" W., 100-203 5	6		

**SPECIALS.**

A	Albion Ho.,	2
B	Barth, H. N., Boiler-works,	6

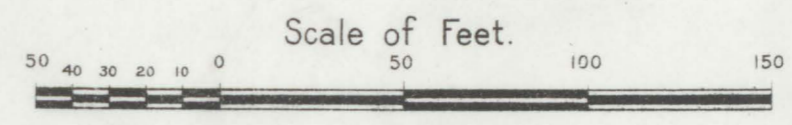
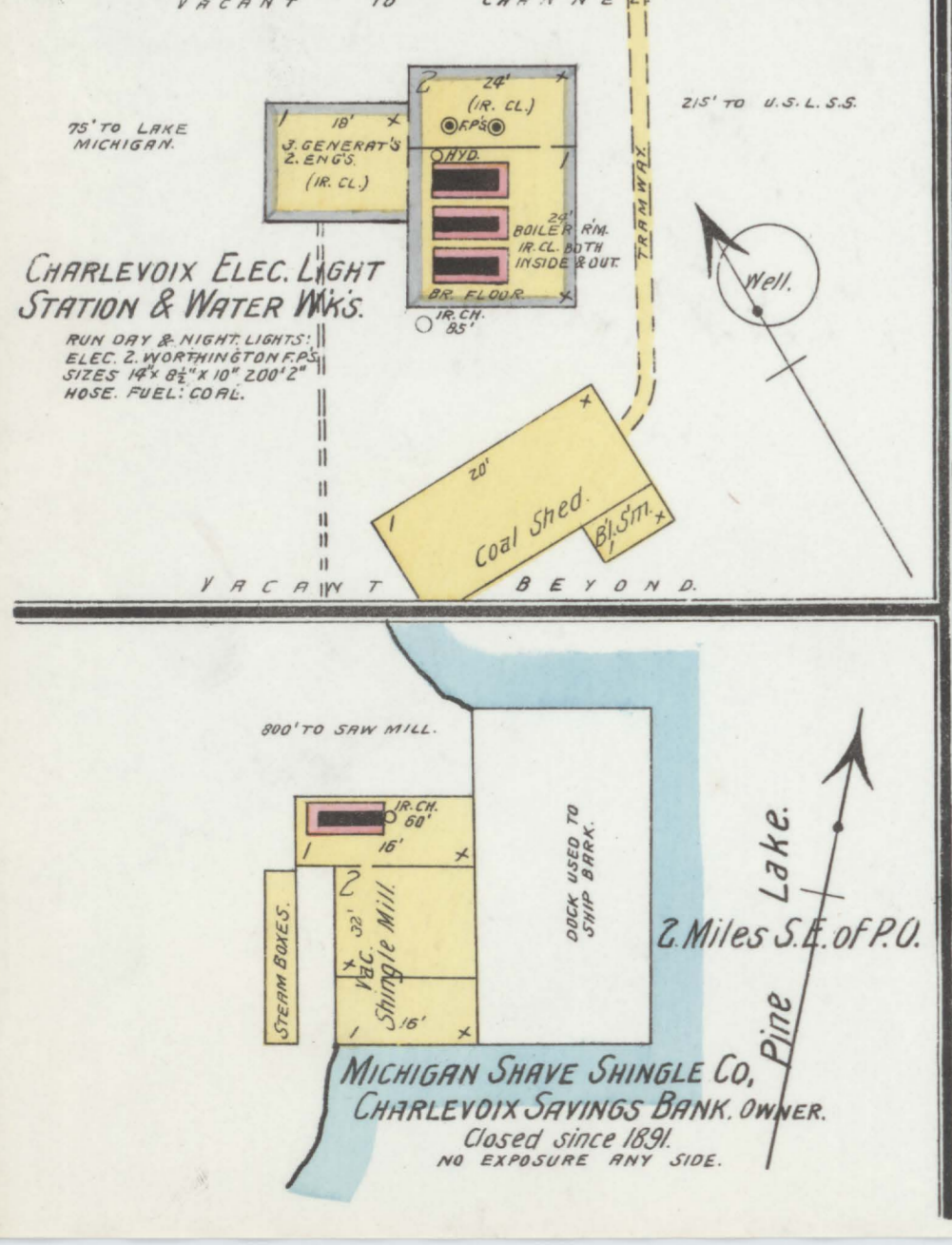
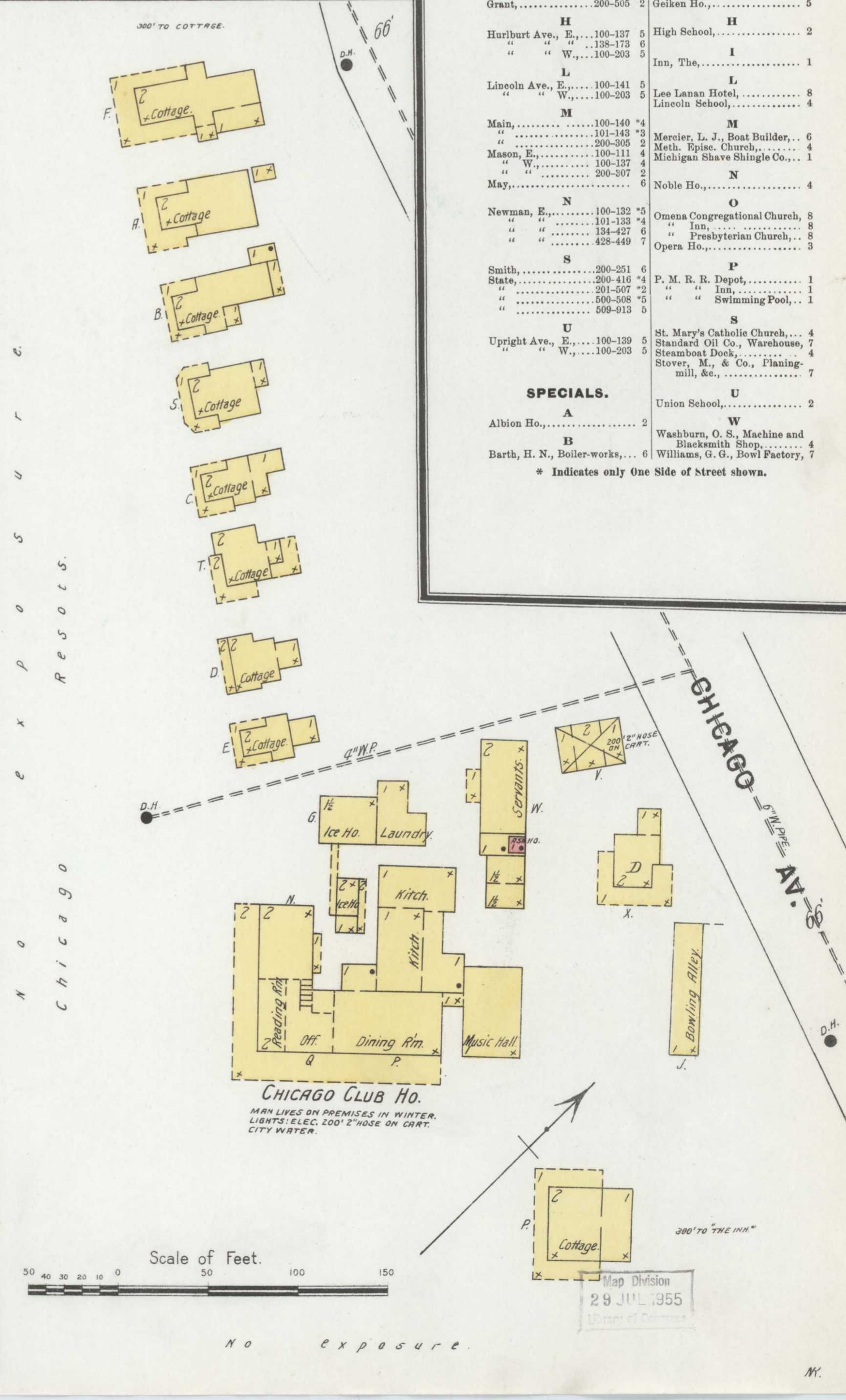
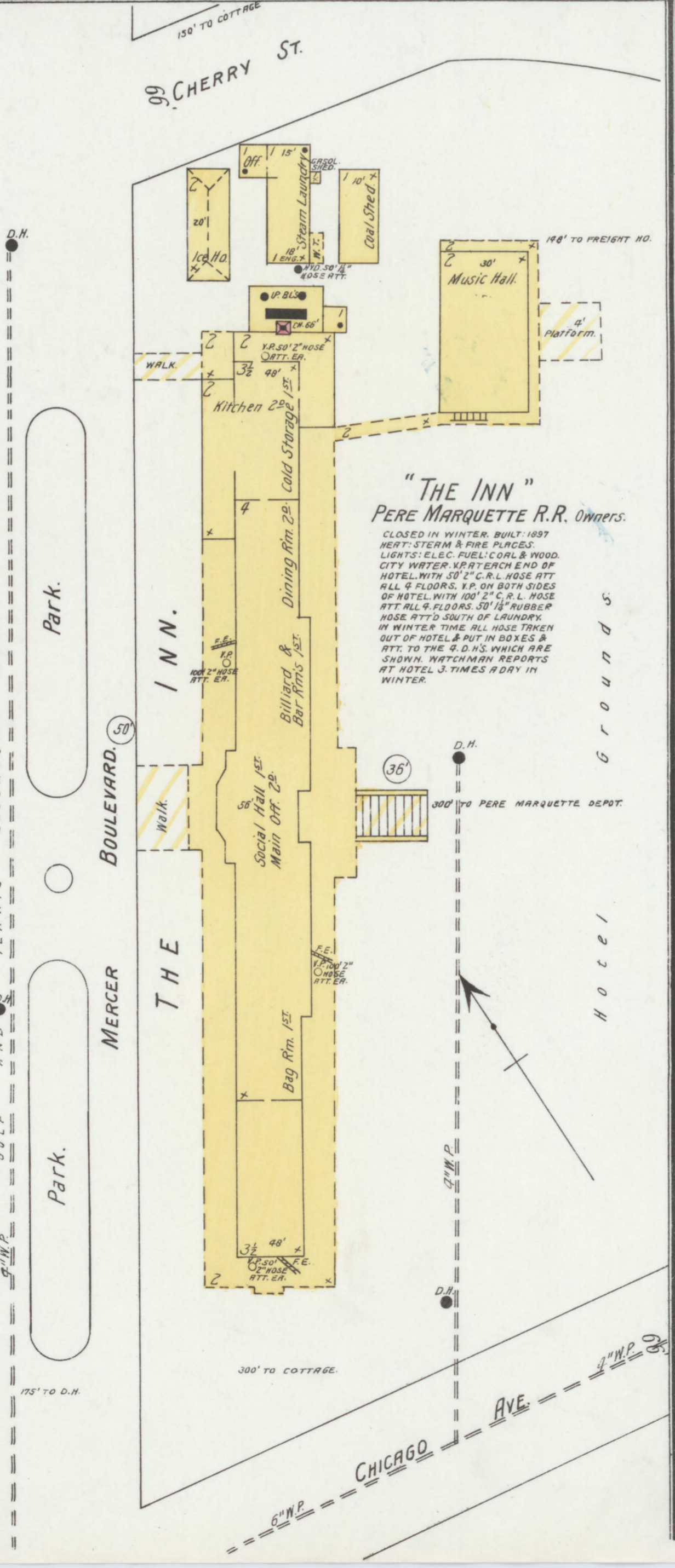
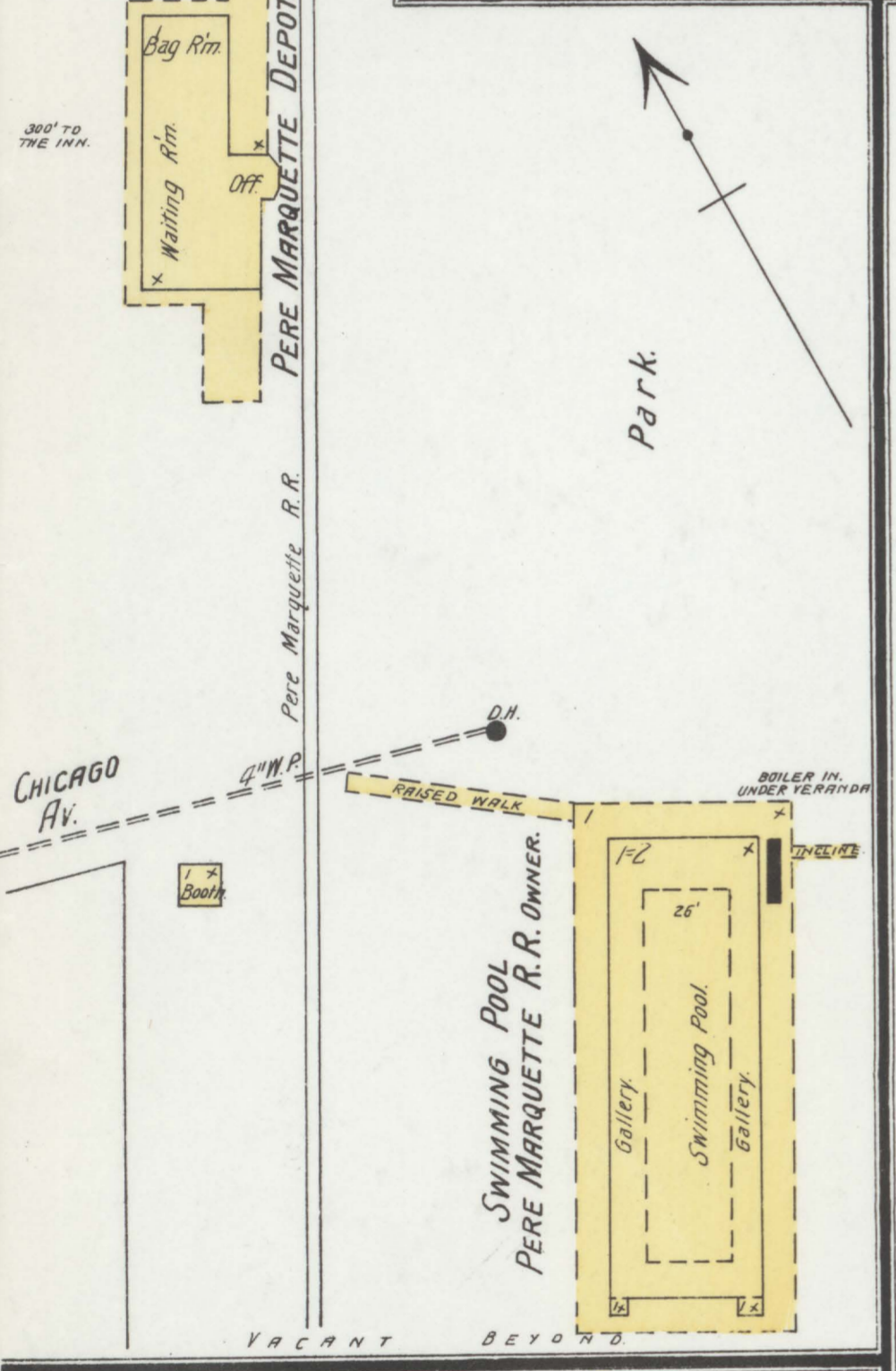
\* Indicates only One Side of Street shown.

**KEY**

BRICK OF STORIES  
 BRICK OF 1 STORY  
 BRICK OF 2 STORIES  
 BRICK OF 3 STORIES  
 BRICK OF 4 STORIES  
 BRICK OF 5 STORIES  
 BRICK OF 6 STORIES  
 BRICK OF 7 STORIES  
 BRICK OF 8 STORIES  
 BRICK OF 9 STORIES  
 BRICK OF 10 STORIES  
 BRICK OF 11 STORIES  
 BRICK OF 12 STORIES  
 BRICK OF 13 STORIES  
 BRICK OF 14 STORIES  
 BRICK OF 15 STORIES  
 BRICK OF 16 STORIES  
 BRICK OF 17 STORIES  
 BRICK OF 18 STORIES  
 BRICK OF 19 STORIES  
 BRICK OF 20 STORIES

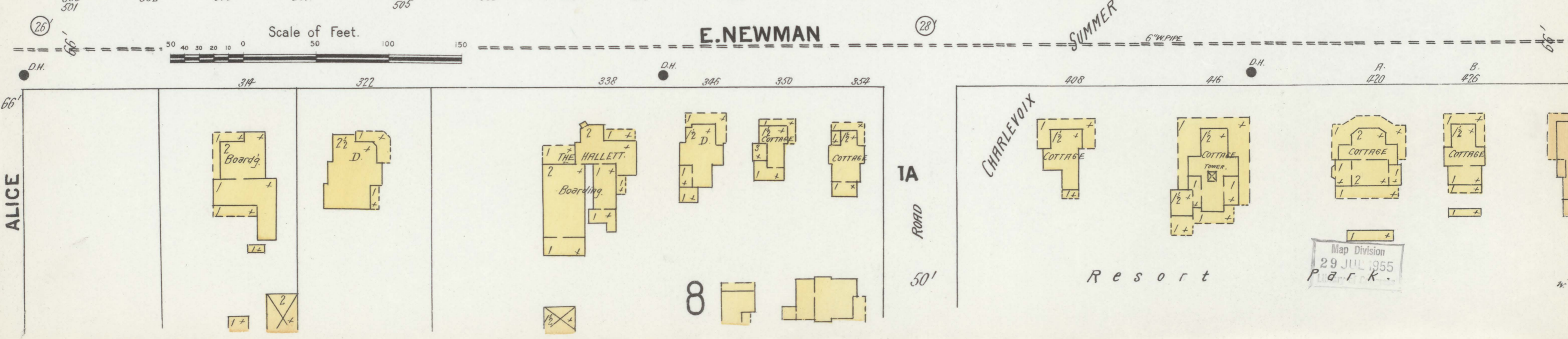
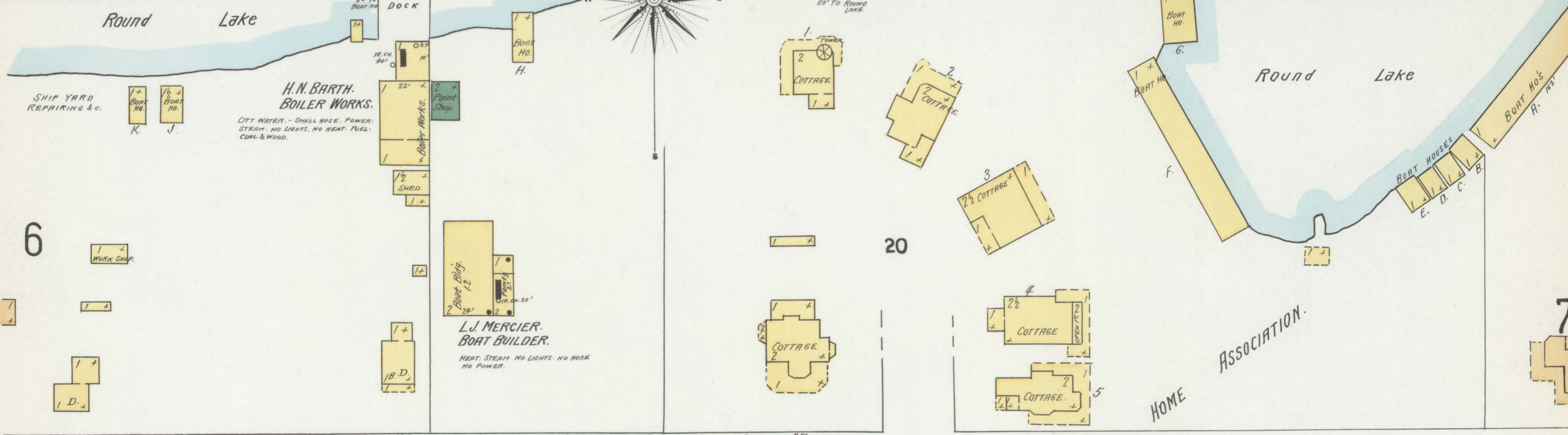
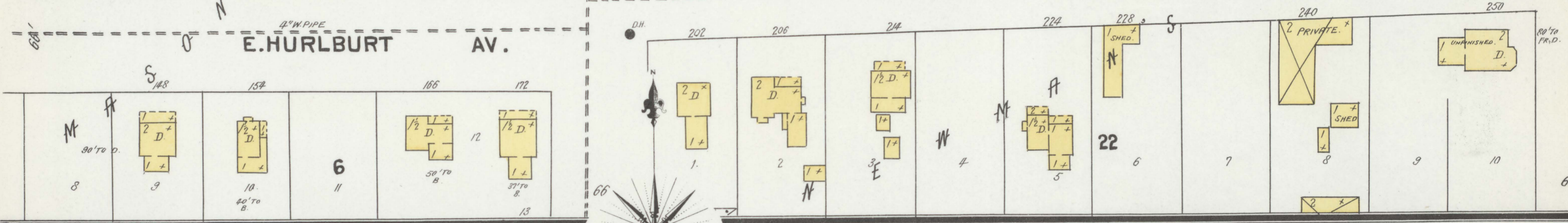
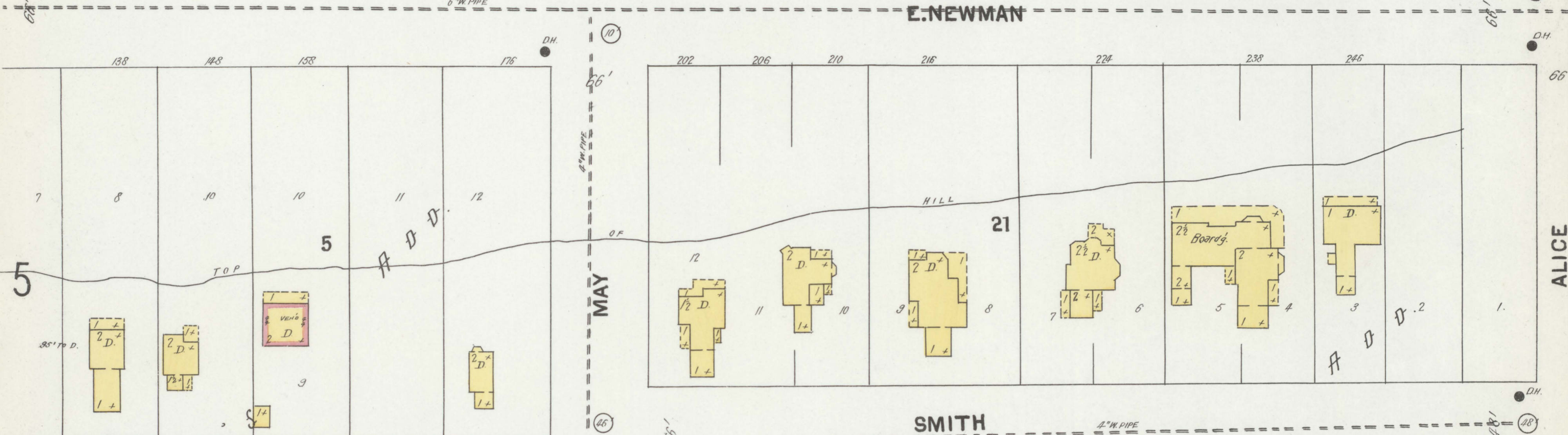
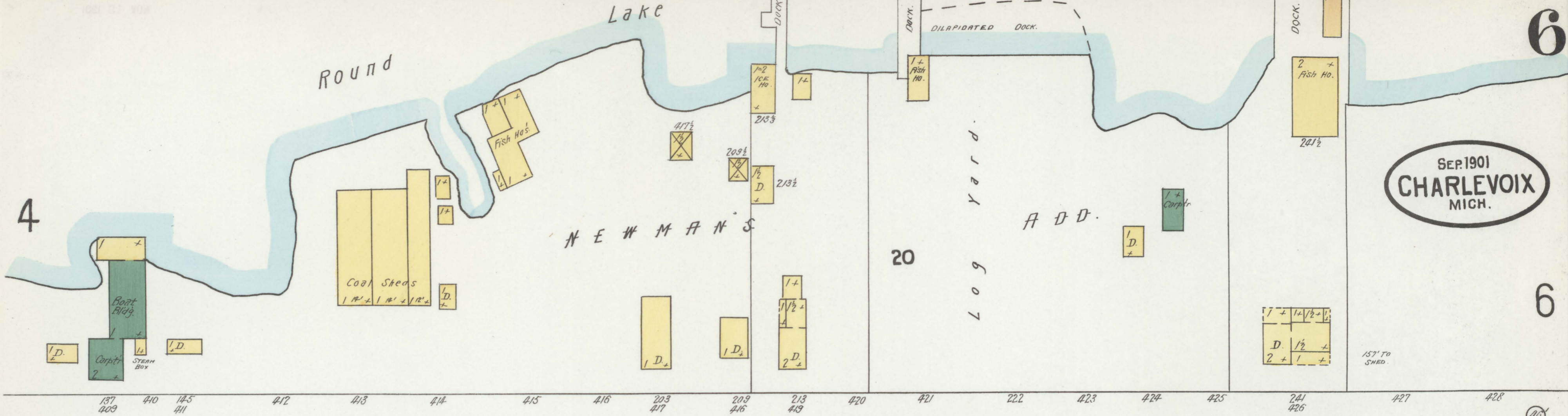
STABLE BUILDINGS COLORED YELLOW ARE FRAME  
 RED BRICK  
 BLUE STONE  
 GRAY IRON  
 BROWN ADOBES  
 GREEN SPECIALS

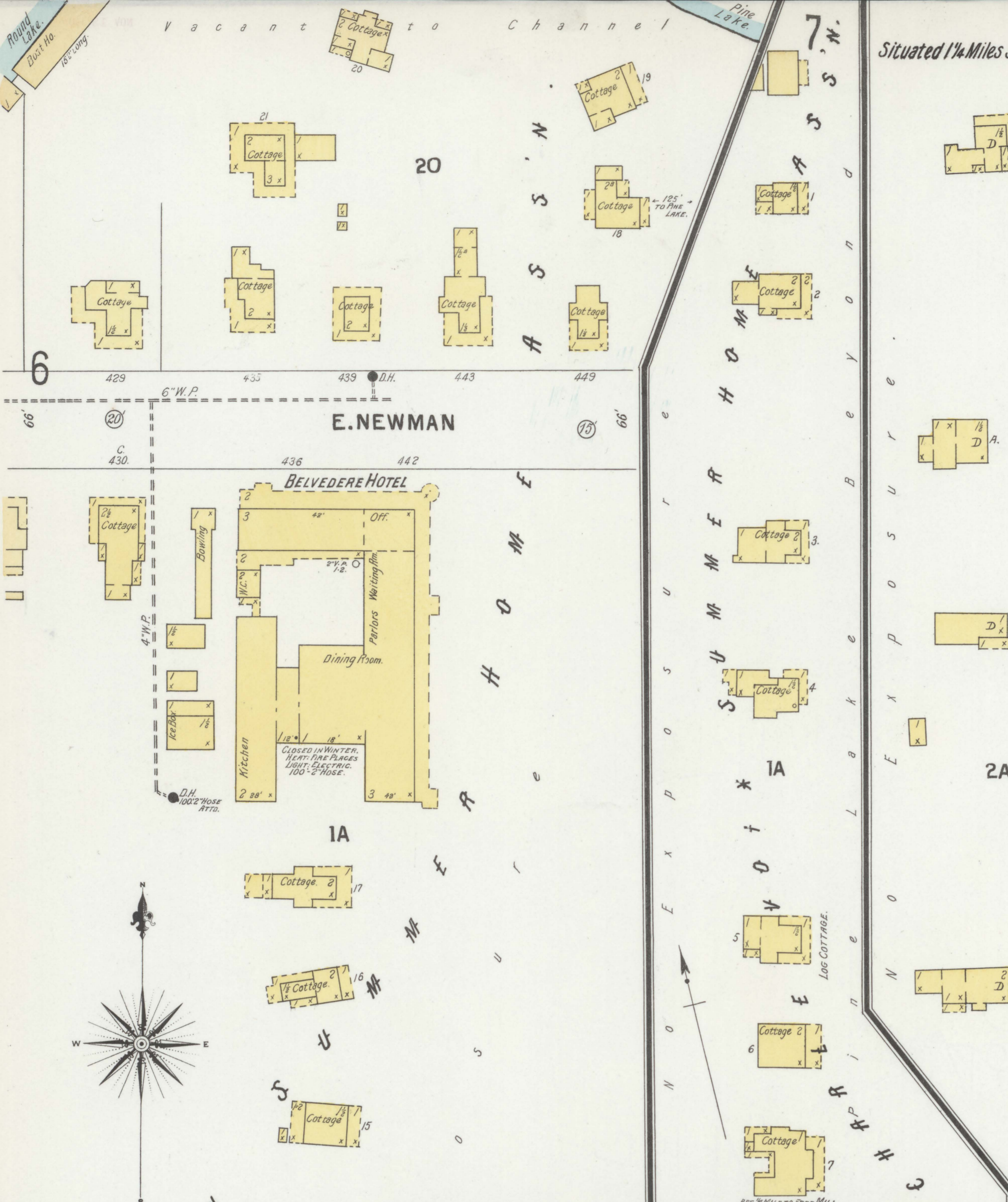
(S) INDICATE RELATIVE HEIGHTS.  
 FIRE STATION, AS SHOWN ON KEY MAP.  
 ALTERNATE STREET NOS ARE ACTUAL.  
 CONSECUTIVE STREET NOS ARE ARBITRARY.



Map Division  
 29 JUL 1955  
 Library of Congress

SEP. 1901  
CHARLEVOIX  
MICH.

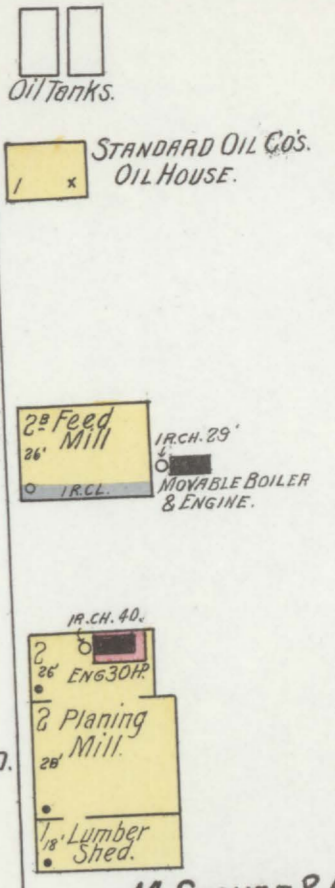




Situated 1/4 Miles S.E. of Post Office.

ABOUT 1/4 MILE TO COTTAGES.

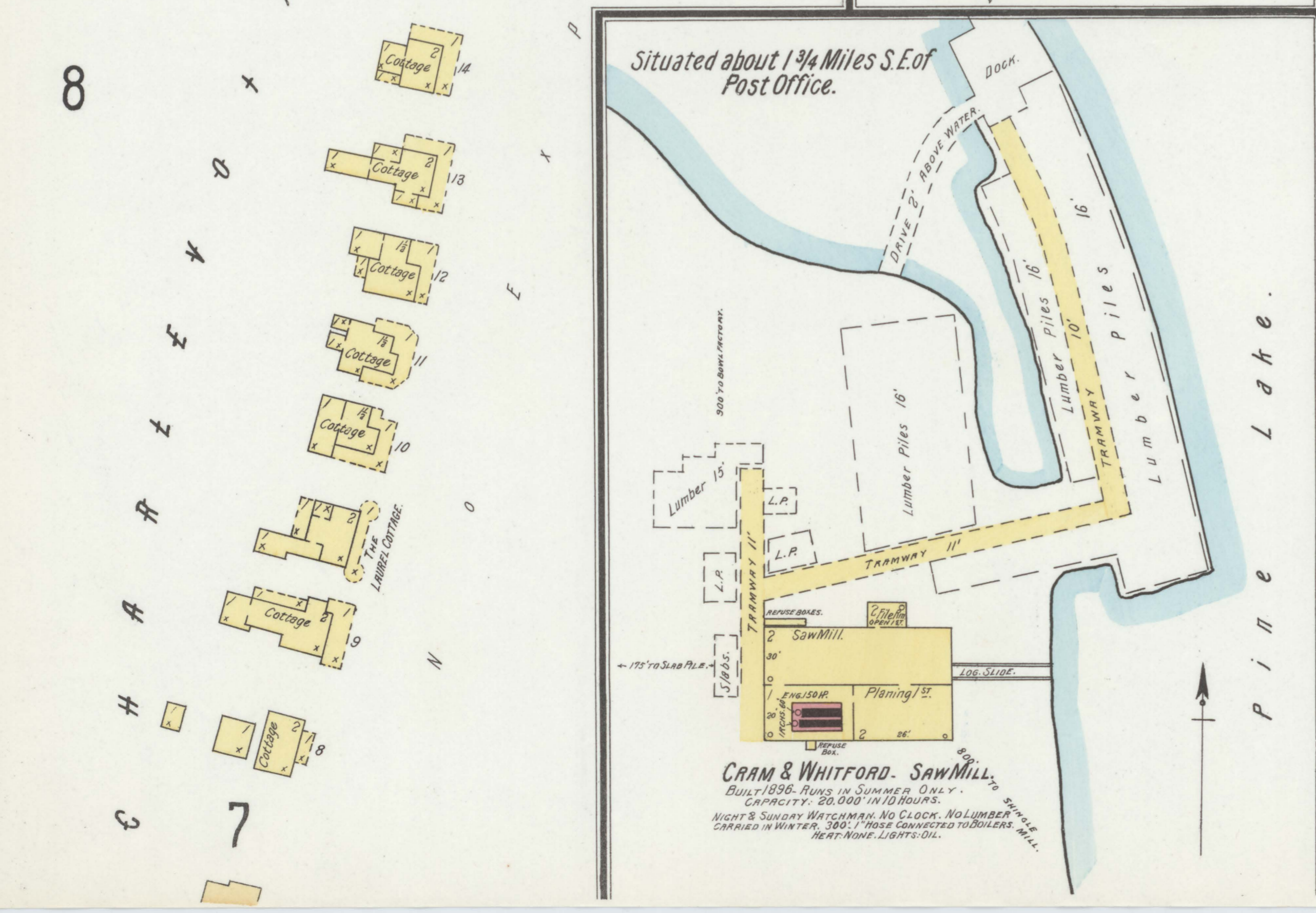
SEP 1901  
**CHARLEVOIX**  
MICH.



**M. STOVER & CO.**  
PLANING MILL & MFR'S. OF  
FISH CORKS.  
RUNS THROUGH THE YEAR.  
NO WATCHMAN. HEAT: STOVE'S. FUEL: WOOD.  
LIGHTS: NONE. FORCE PUMPS: SMALL PUMP.

LAKE

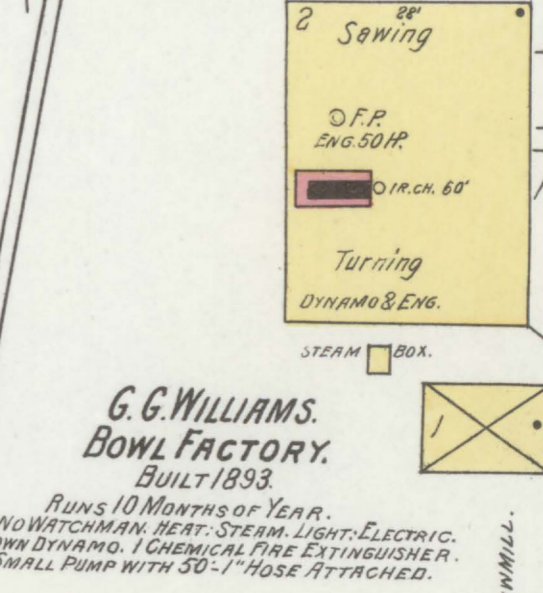
PERE MARQUETTE R. R.



Situated about 1 1/4 Miles S.E. of Post Office.

Scale of Feet.  
0 50 100 150

Log Yard.



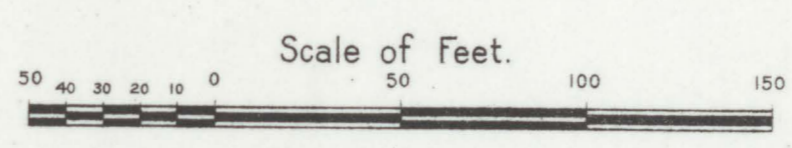
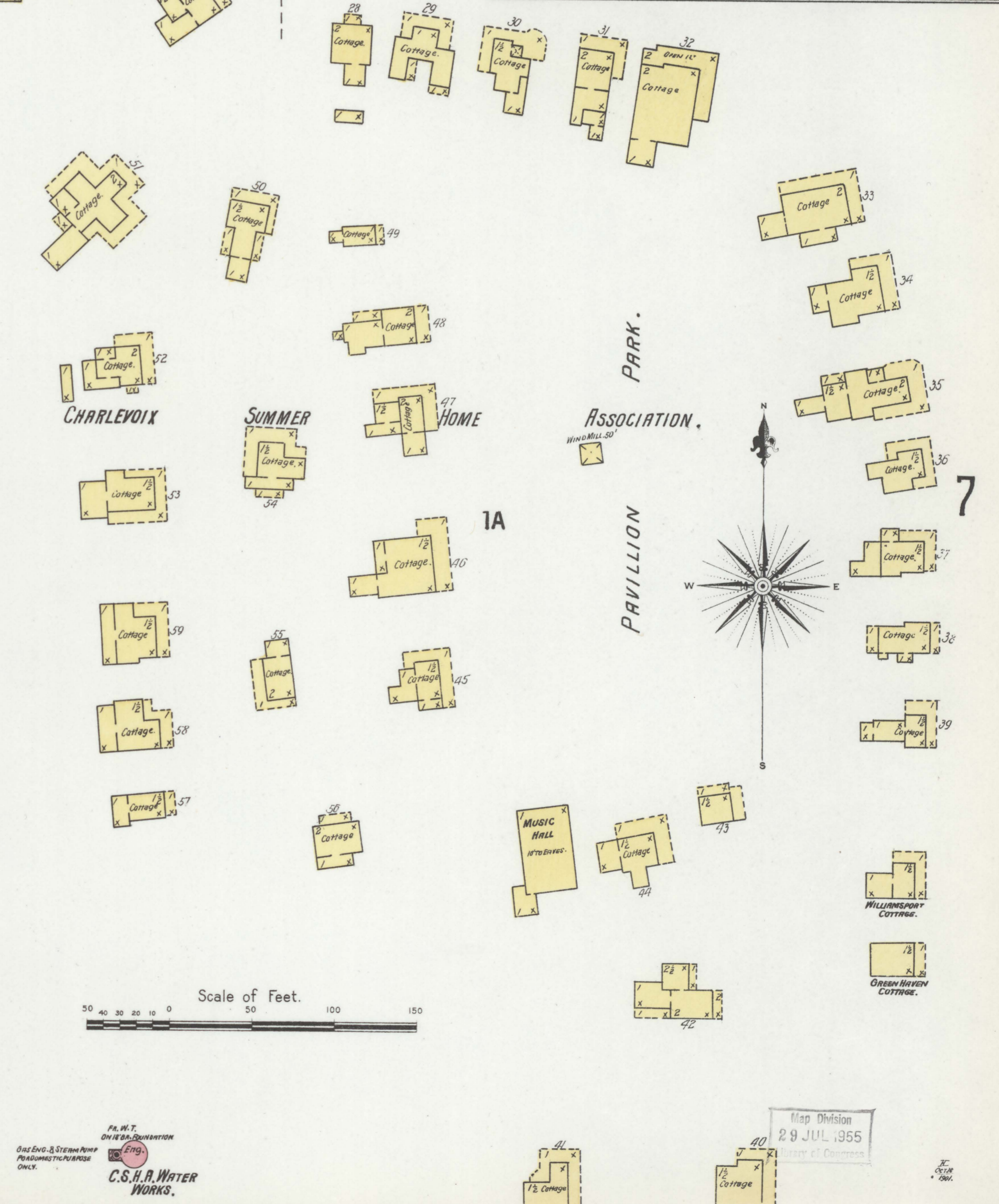
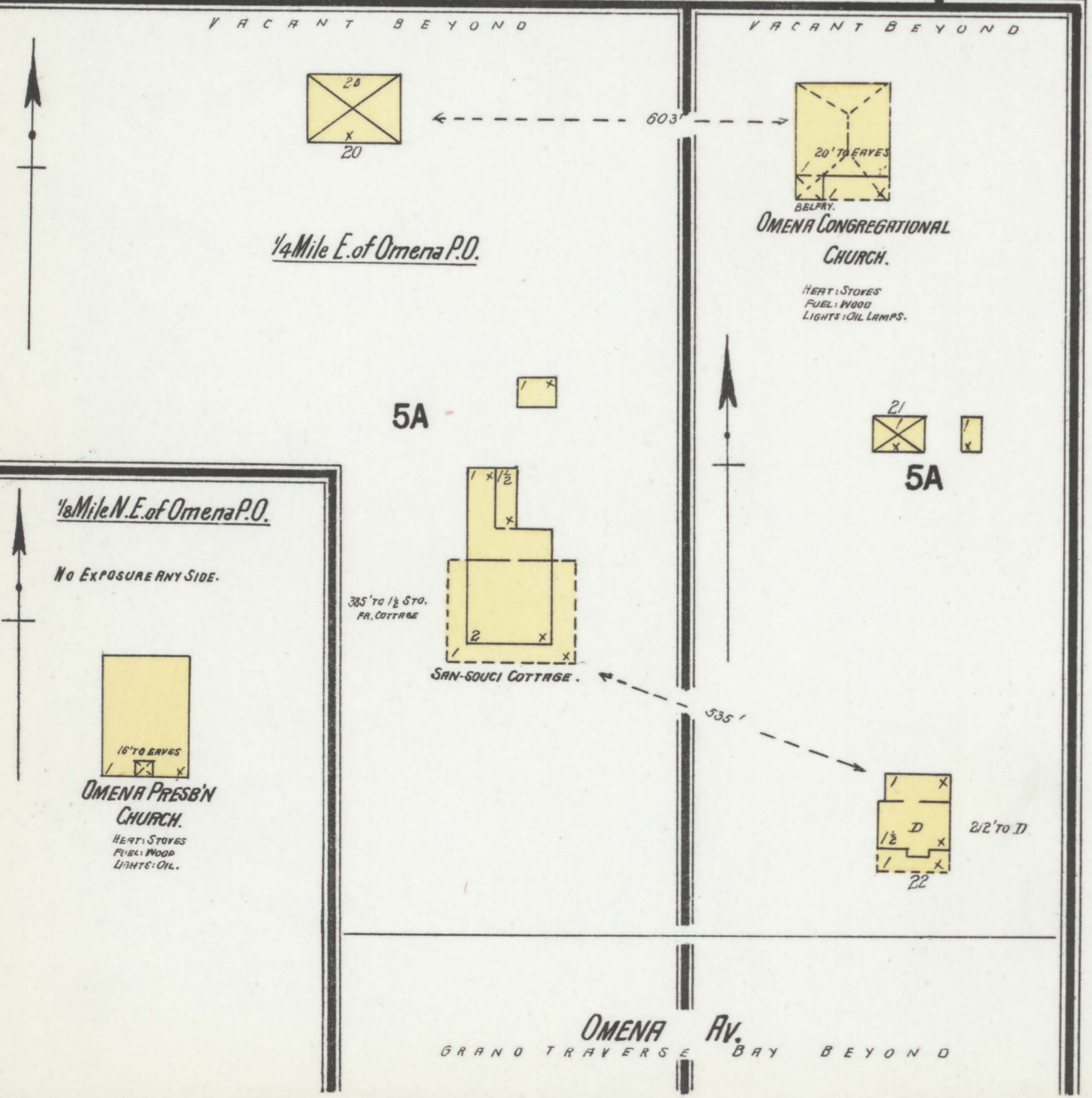
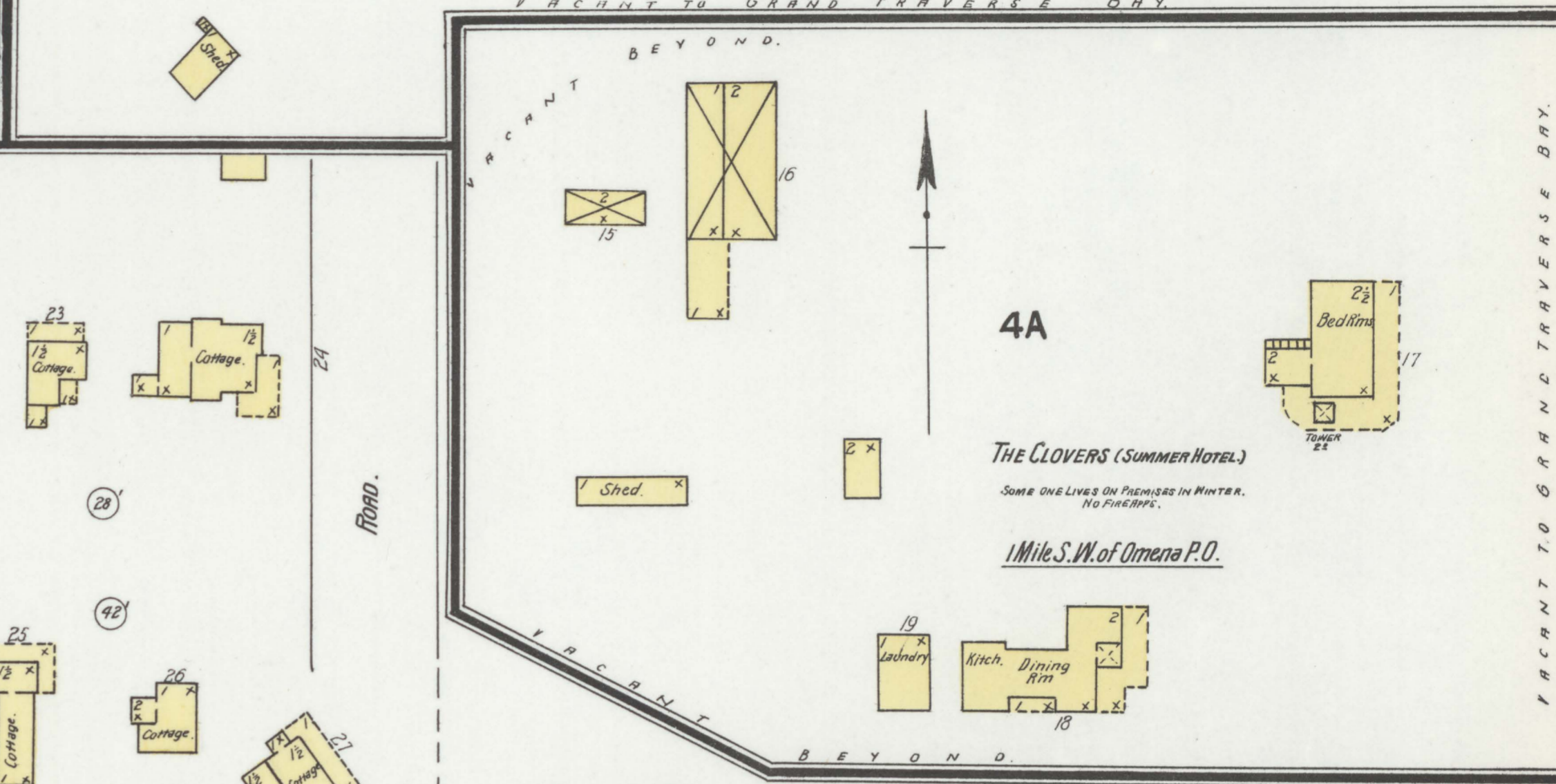
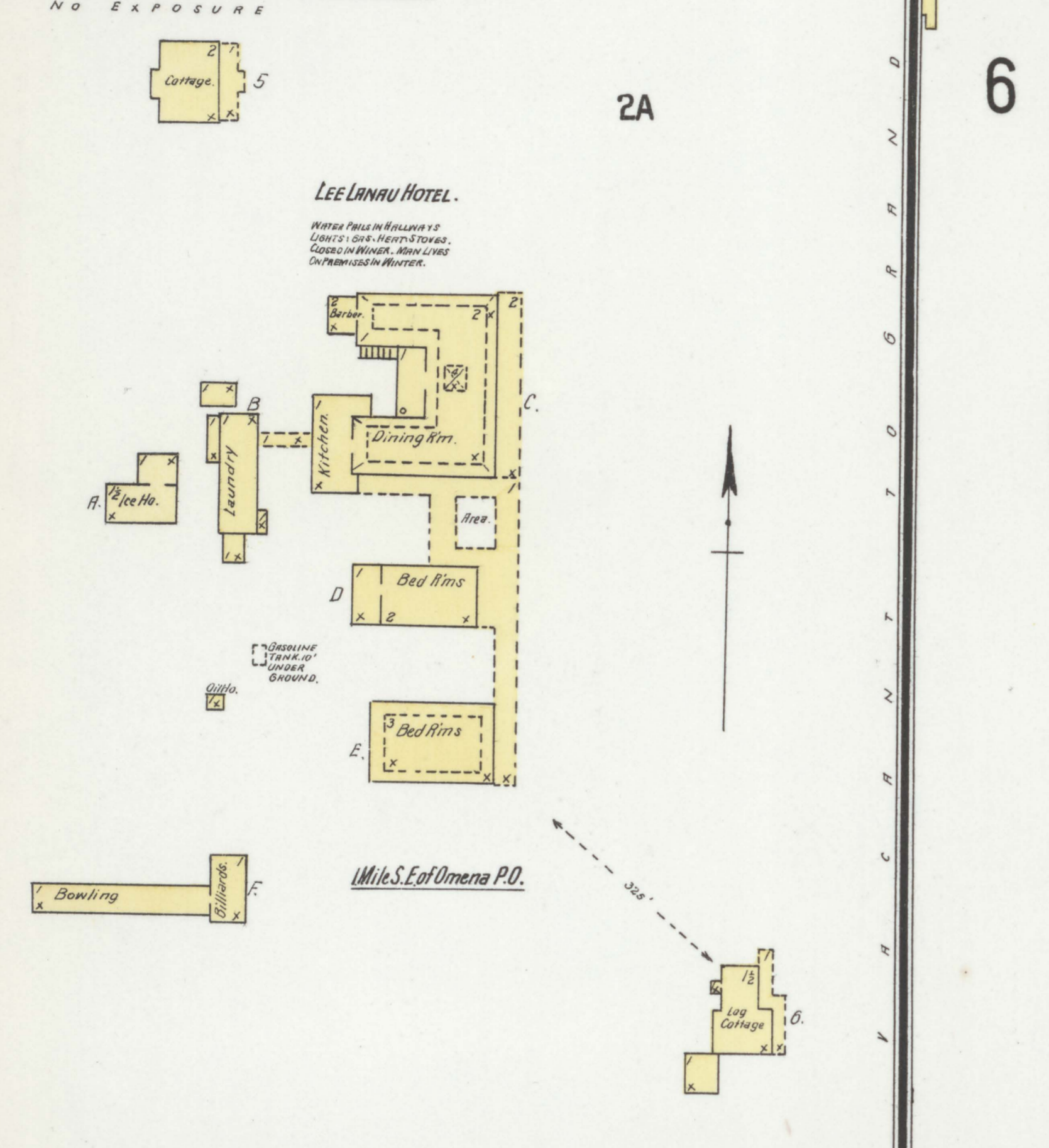
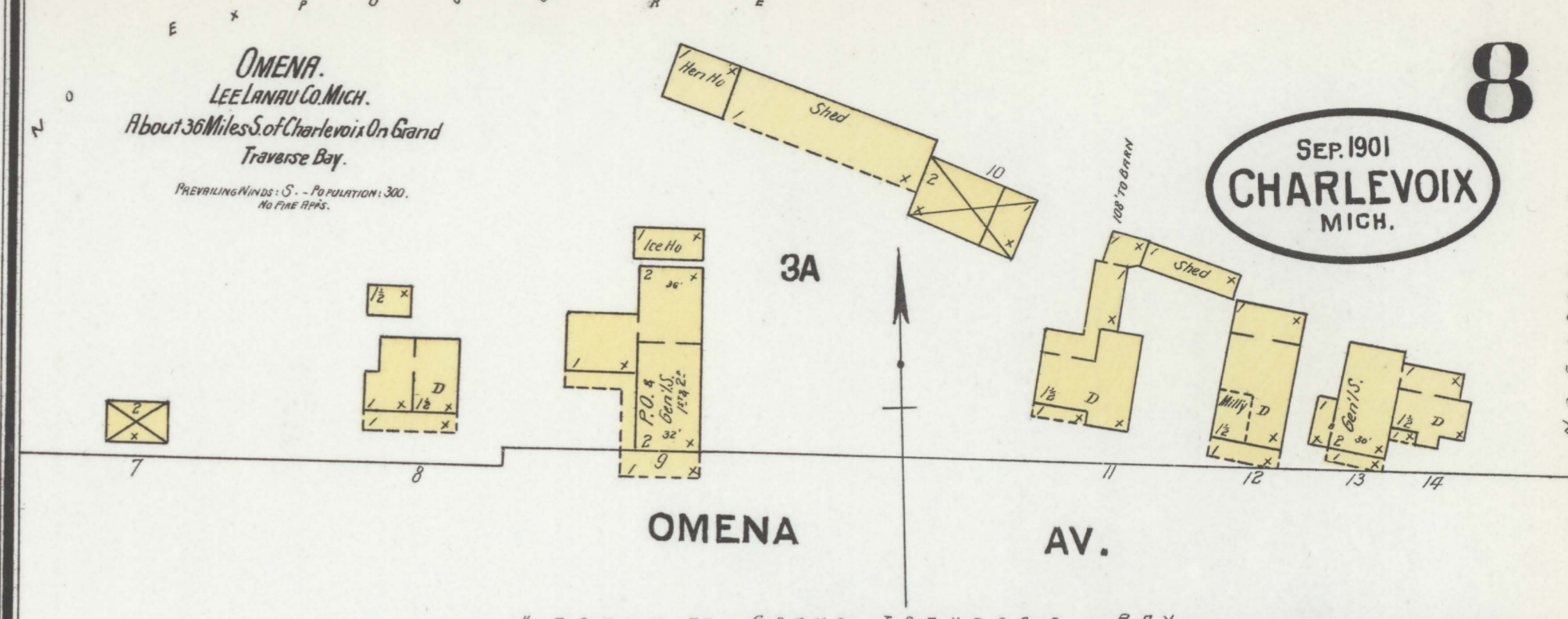
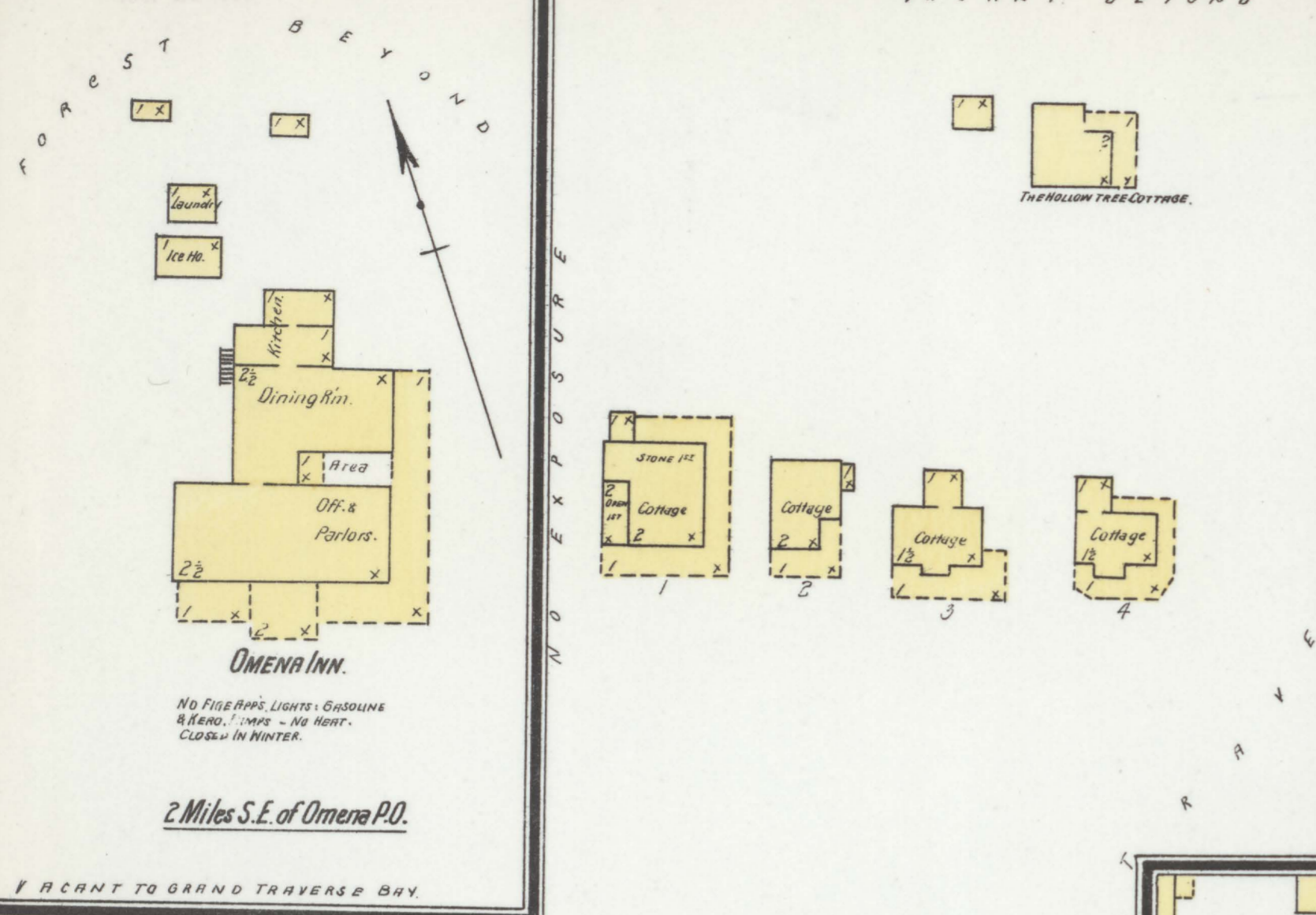
**G.G. WILLIAMS.**  
BOWL FACTORY.  
BUILT 1893.  
RUNS 10 MONTHS OF YEAR.  
NO WATCHMAN. HEAT: STEAM. LIGHT: ELECTRIC.  
ONE DYNAMO. 1 CHEMICAL FIRE EXTINGUISHER.  
SMALL PUMP WITH 30' HOSE ATTACHED.

Map Division  
29 JULY 1955  
Library of Congress

L a b e l e d B e y o n d P i n e L a k e E x p o s u r e

SEP. 1901  
CHARLEVOIX  
MICH.

OMENA.  
LEE LANAU CO. MICH.  
About 36 Miles S. of Charlevoix On Grand  
Traverse Bay.  
PREVAILING WINDS: S. - Population: 300.  
NO FIRE APPS.



PR. W. T.  
ON 1/2 IN. SCALE  
C.S.H.A. WATER  
WORKS.

Map Division  
29 JUL 1955  
Library of Congress