

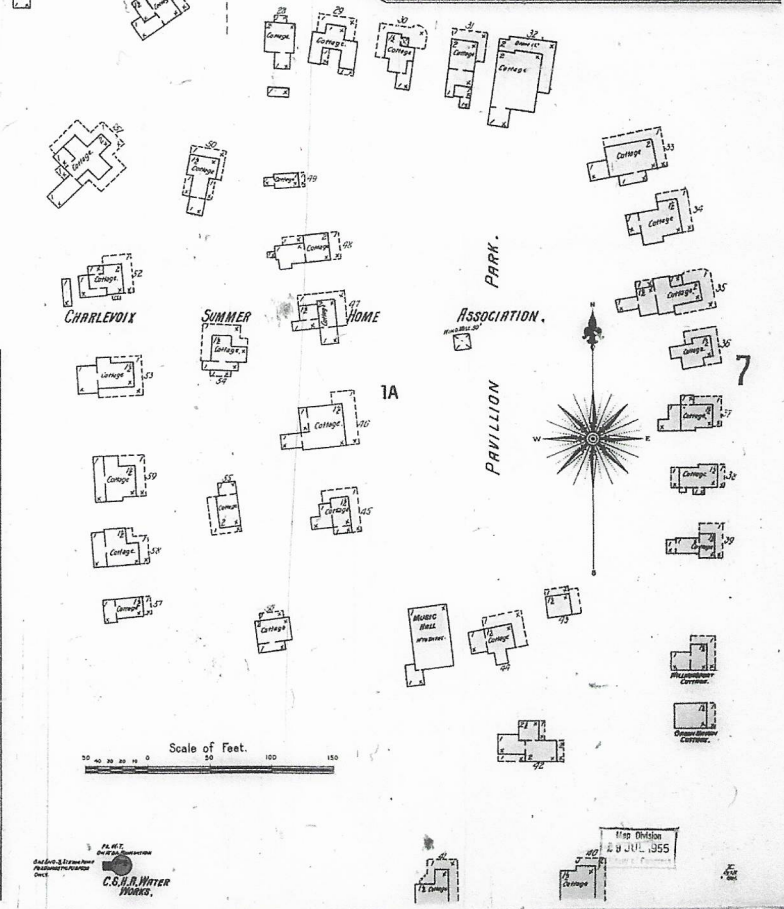
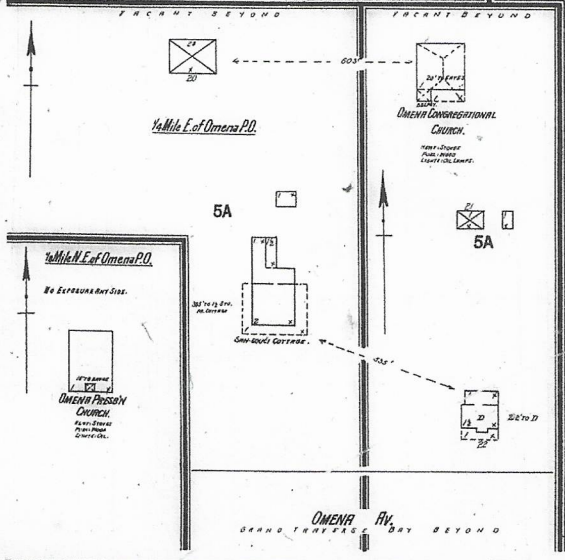
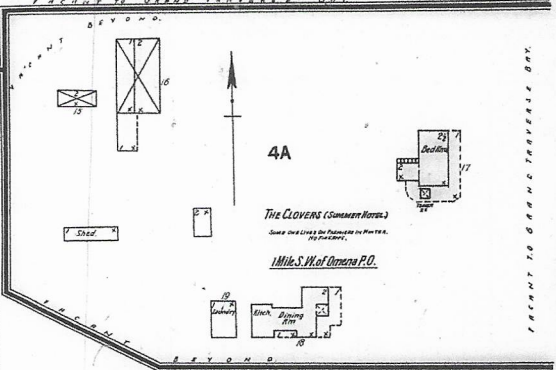
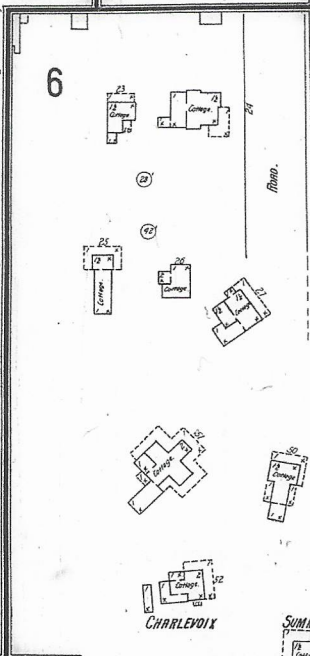
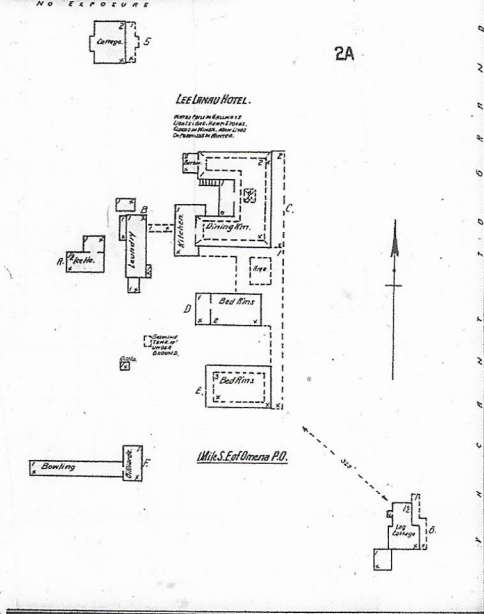
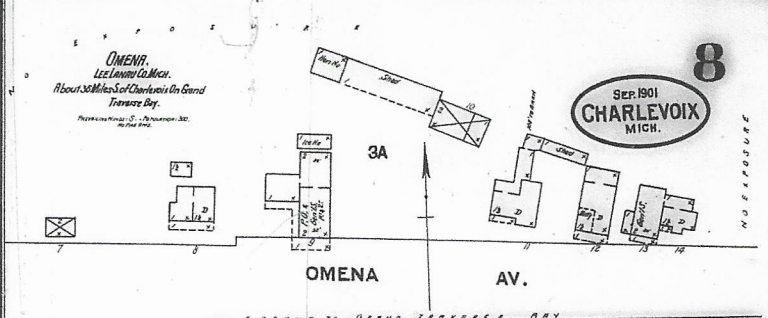
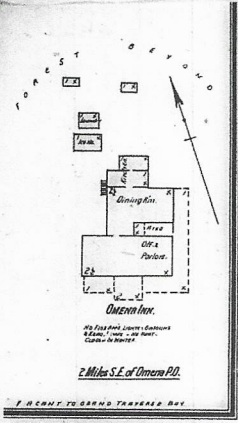




8

SEP 1901  
CHARLEVOIX  
MICH.

OMENA.  
LEE LINNARD COLMICH.  
About 30 Miles S. of Charlevoix on Grand  
Traverse Bay.  
Photographed by S. J. Richardson, 305,  
Grand Ave., Detroit, Mich.



Scale of Feet.  
0 20 40 60 80 100 120 140

C.S. R. WATER  
WORKS

Map Edition  
23 JUL 1955