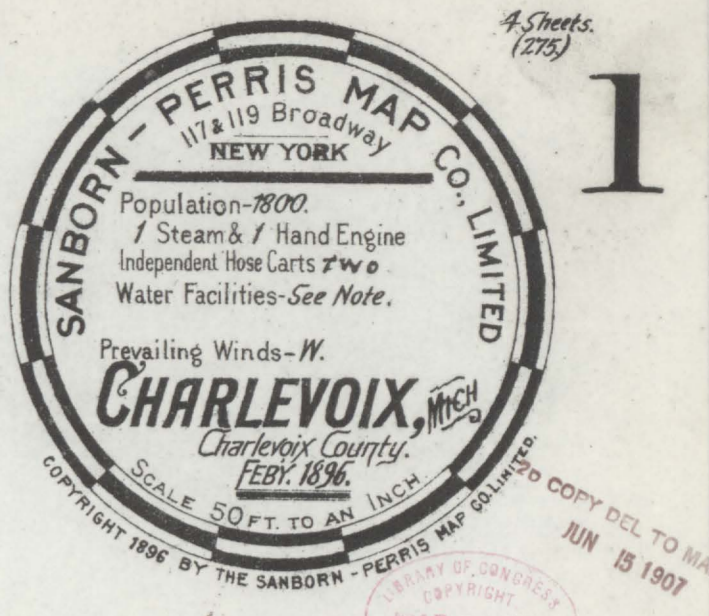
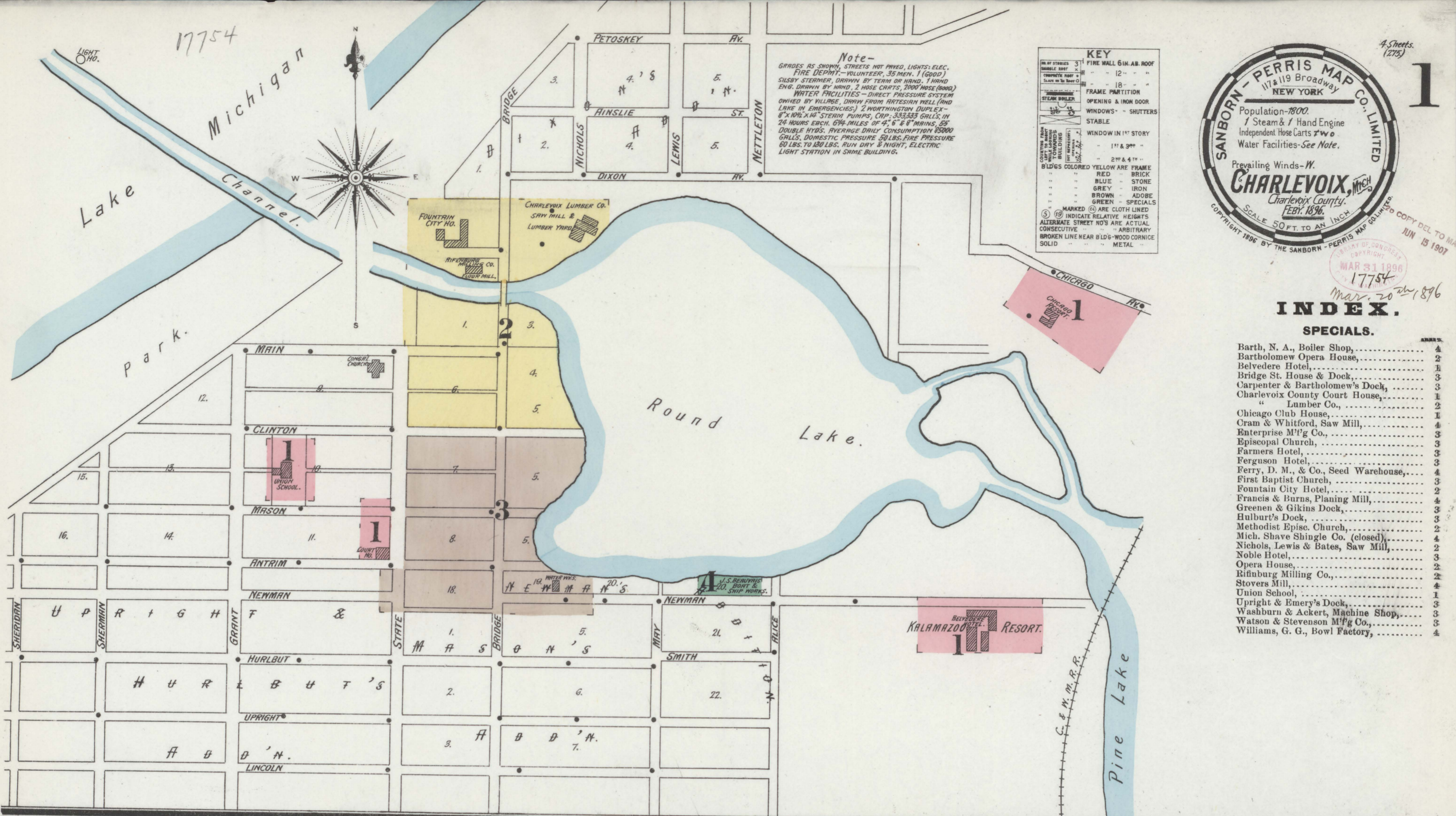


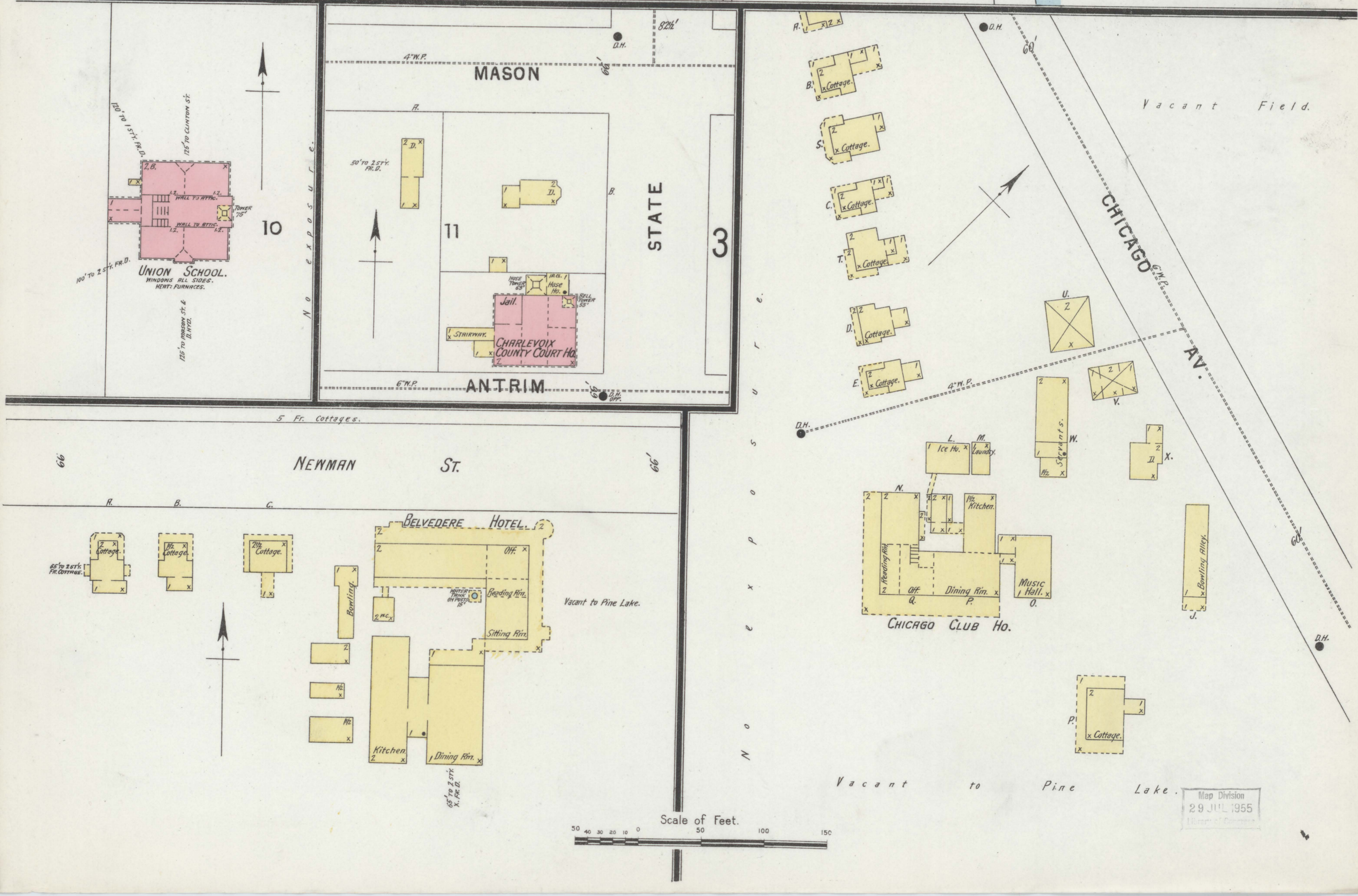
17754



INDEX.

SPECIALS.

Barth, N. A., Boiler Shop,	4
Bartholomew Opera House,	2
Belvedere Hotel,	3
Bridge St. House & Dock,	3
Carpenter & Bartholomew's Dock,	3
Charlevoix County Court House,	2
" Lumber Co.,	1
Chicago Club House,	1
Cram & Whitford, Saw Mill,	4
Enterprise Mfg Co.,	3
Episcopal Church,	3
Farmers Hotel,	3
Ferguson Hotel,	3
Ferry, D. M., & Co., Seed Warehouse,	4
First Baptist Church,	3
Fountain City Hotel,	3
Francis & Burns, Planing Mill,	4
Green & Gikins Dock,	3
Hulbert's Dock,	3
Methodist Episc. Church,	2
Mich. Shave Shingle Co. (closed),	4
Nichols, Lewis & Bates, Saw Mill,	2
Noble Hotel,	3
Opera House,	2
Rifenburg Milling Co.,	2
Stovers Mill,	1
Union School,	1
Upright & Emery's Dock,	3
Washburn & Ackert, Machine Shop,	3
Watson & Stevenson Mfg Co.,	3
Williams, G. G., Bowl Factory,	4



Map Division
 29 JUL 1955
 Bureau of Census